



**Sprung**  
Since 1887



**Sprung** Performance Arenas



# Innovative Building Solutions

Engineered & Manufactured by Sprung Instant Structures



## Edge School Alberta, Canada

*"Our Sprung arenas have far exceeded our expectations in terms of look, feel and performance."*

*"We absolutely hit a HOME RUN with Sprung Instant Structures."*

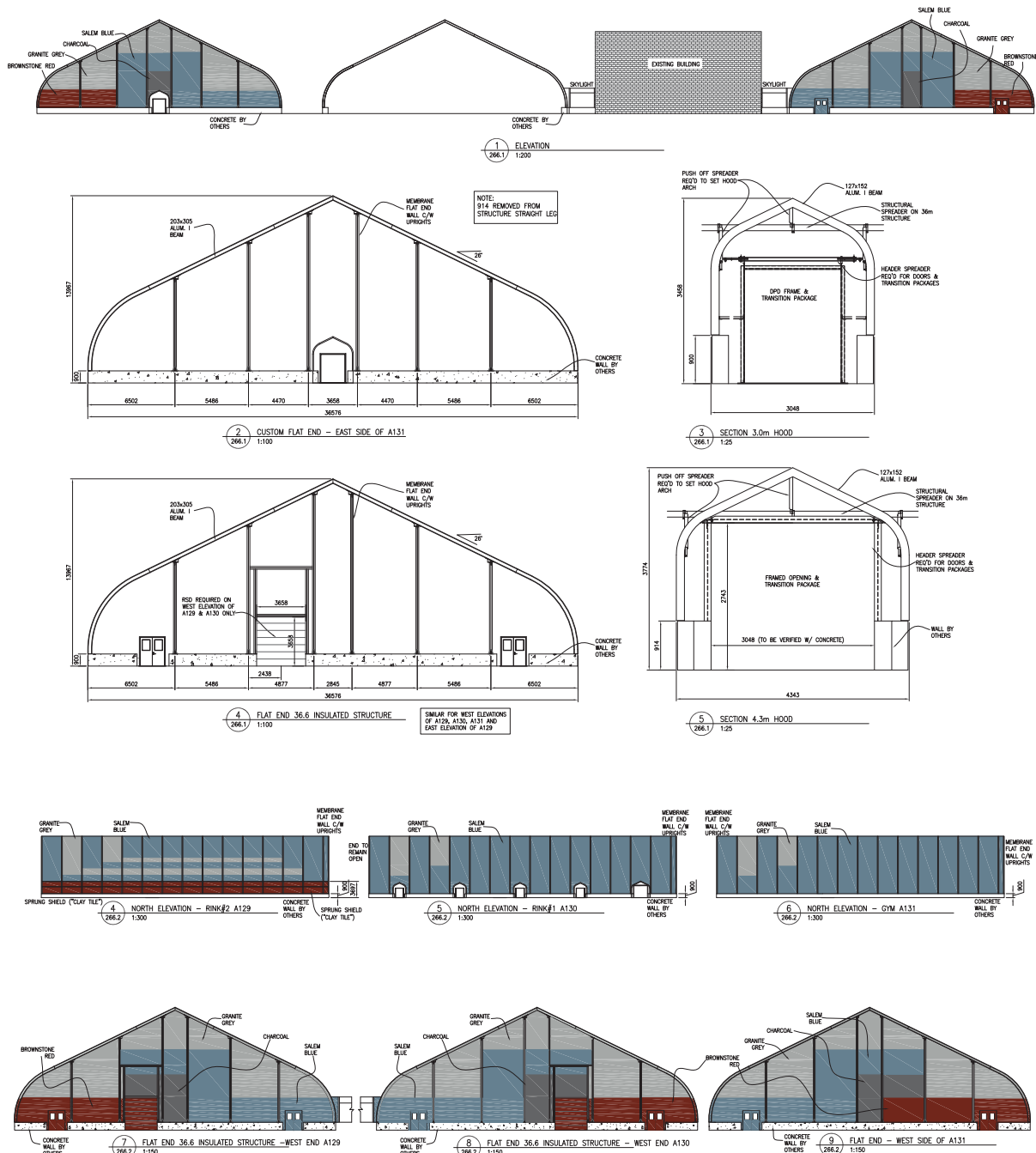


Brent R. M. Devost  
Founder, President & CEO Edge School

The Edge School is a private institution with a mission to provide students from Grade 6 to 12 with a purposeful integration of excellence in academics, athletics and character-building.

Several years ago the school expanded their property and looked to traditional construction for classrooms, two NHL-sized hockey rinks and a gymnasium. When the plans were developed, the project costs exceeded their available budget by \$10 million. The architect and project manager approached Sprung for an alternative proposal. After careful consideration, three 120' wide Sprung structures were provided and erected with a net savings of \$7 million. The decision to use Sprung allowed the Edge School expansion to go forward on budget and on time.

The ice arenas at the Edge School are a showcased aspect of this multi-venue development and have received high praise from visiting teams and spectators.



“Our Sprung arenas have far exceeded our expectations in terms of look, feel and performance. The positive comments we have received on how much space there is, how bright the facility is and how good they look has been overwhelming. And most importantly folks cannot stop talking about the quality of the ice. Certainly this is a combination of ice plant and facility design however a major question in building Sprung arenas was the outside temperature and ice quality – well the questions have been answered with vigor. In 30 degree celsius weather, the ice has been outstanding!

Sprung structures have been providing outstanding value for our school. They are certainly not the cheapest option nor are they the most expensive but rather a perfect middle ground. They look great both inside and out, they allow the ice surfaces to be of impeccable quality, they are so bright inside for the players and all of this was possible in such a short time frame and at such a reduced cost from a traditional bricks and mortar facility.

Initially when we set out on this project we were very focused on building facilities that would be considered the home for “optimal performance”. We were invested in putting in the best gymnasium flooring, the best ice plant, the best arena board system, a large amount of lighting etc.... We were less concerned about a “grand aesthetic” look but rather were looking for a less costly covering solution. We absolutely hit a HOME RUN with Sprung Instant Structures. Sprung structures actually enhanced our performance opportunities, look absolutely incredible both inside and out side and were erected in a fraction of the time it would have taken had we made other choices.”



Brent R. M. Devost  
Founder, President & CEO  
Edge School

“Everyone who has walked through the complex has been blown away by it. It’s fantastic. The ceiling is 47 feet high, so it feels like a mini-coliseum. Overall, we’ve probably saved between \$5 million and \$7 million by going with the Sprung structures. That’s huge.”

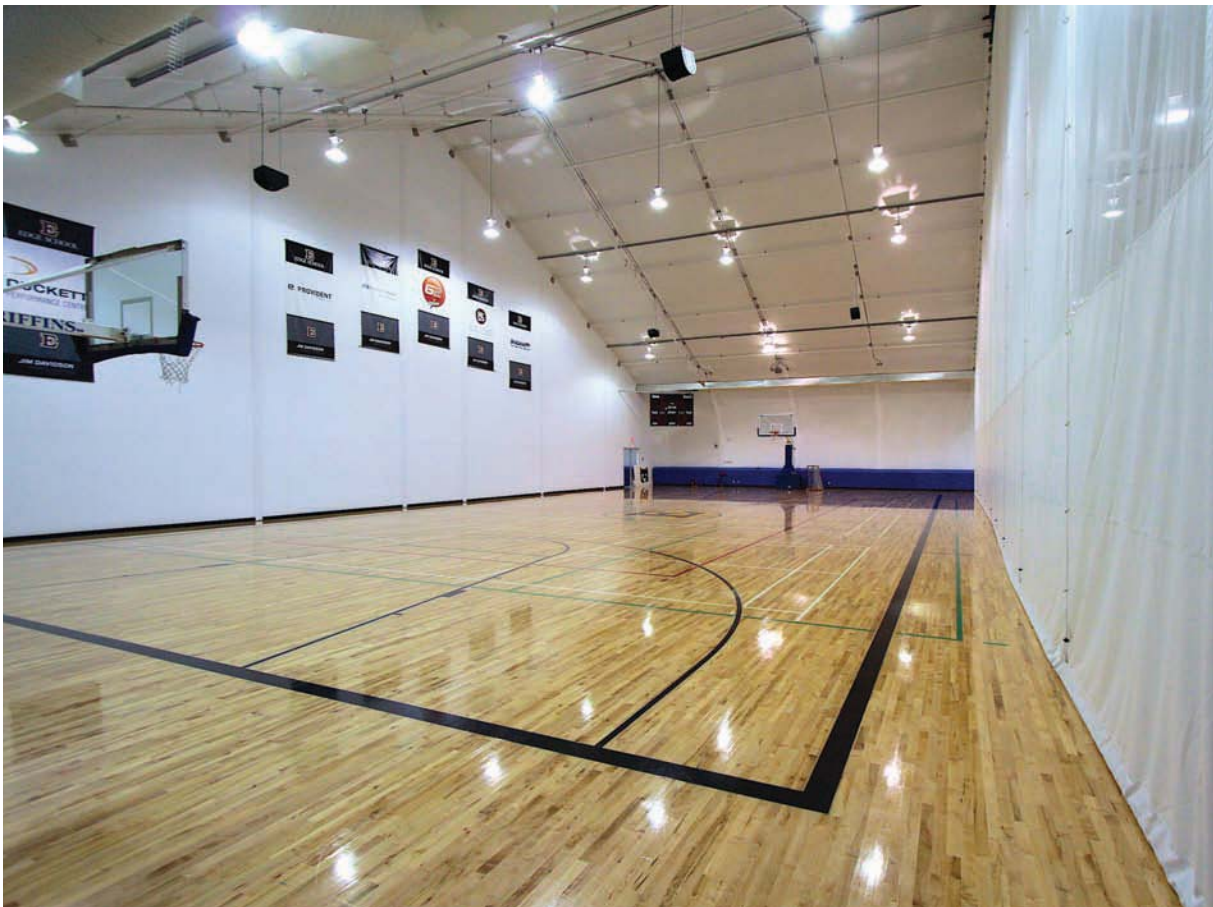
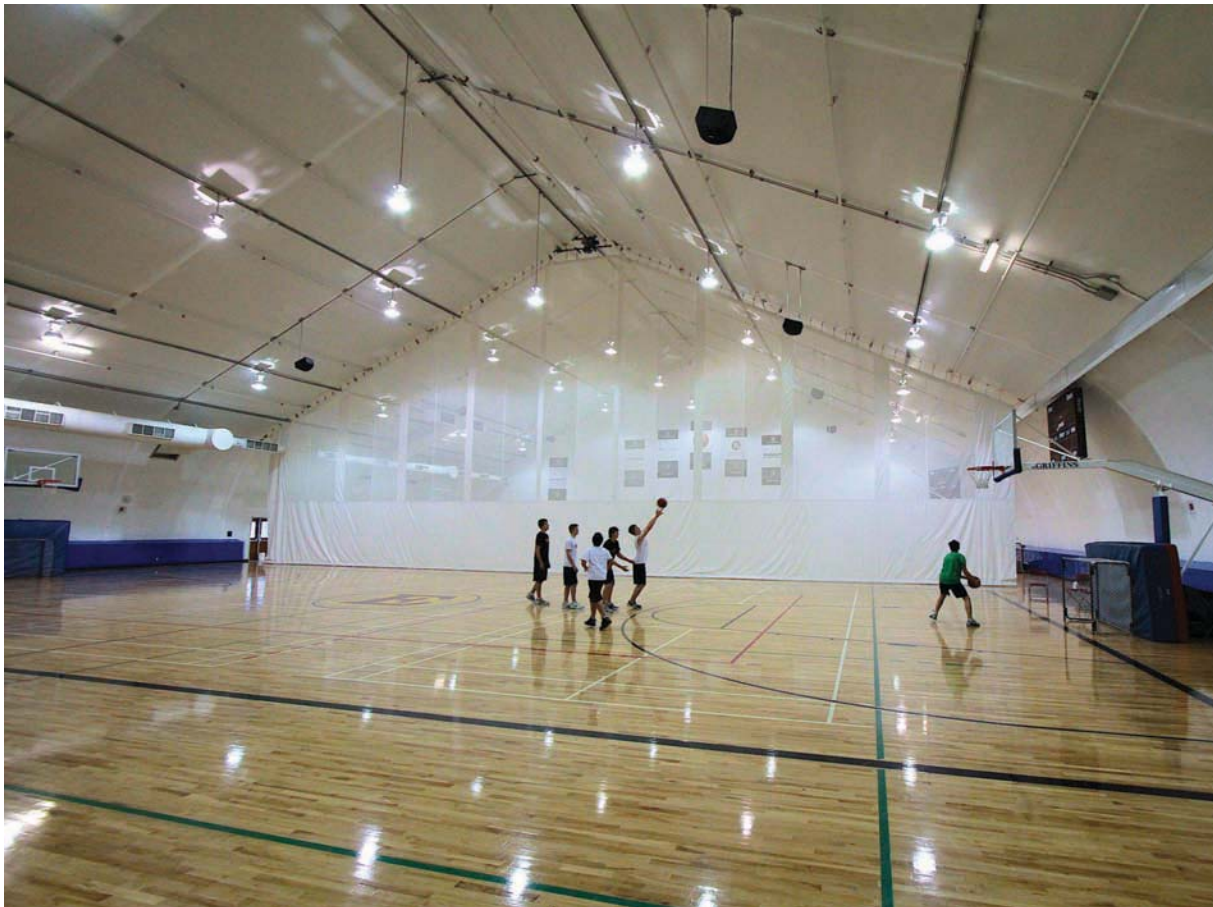
Brent R. M. Devost  
Founder, President & CEO Edge School







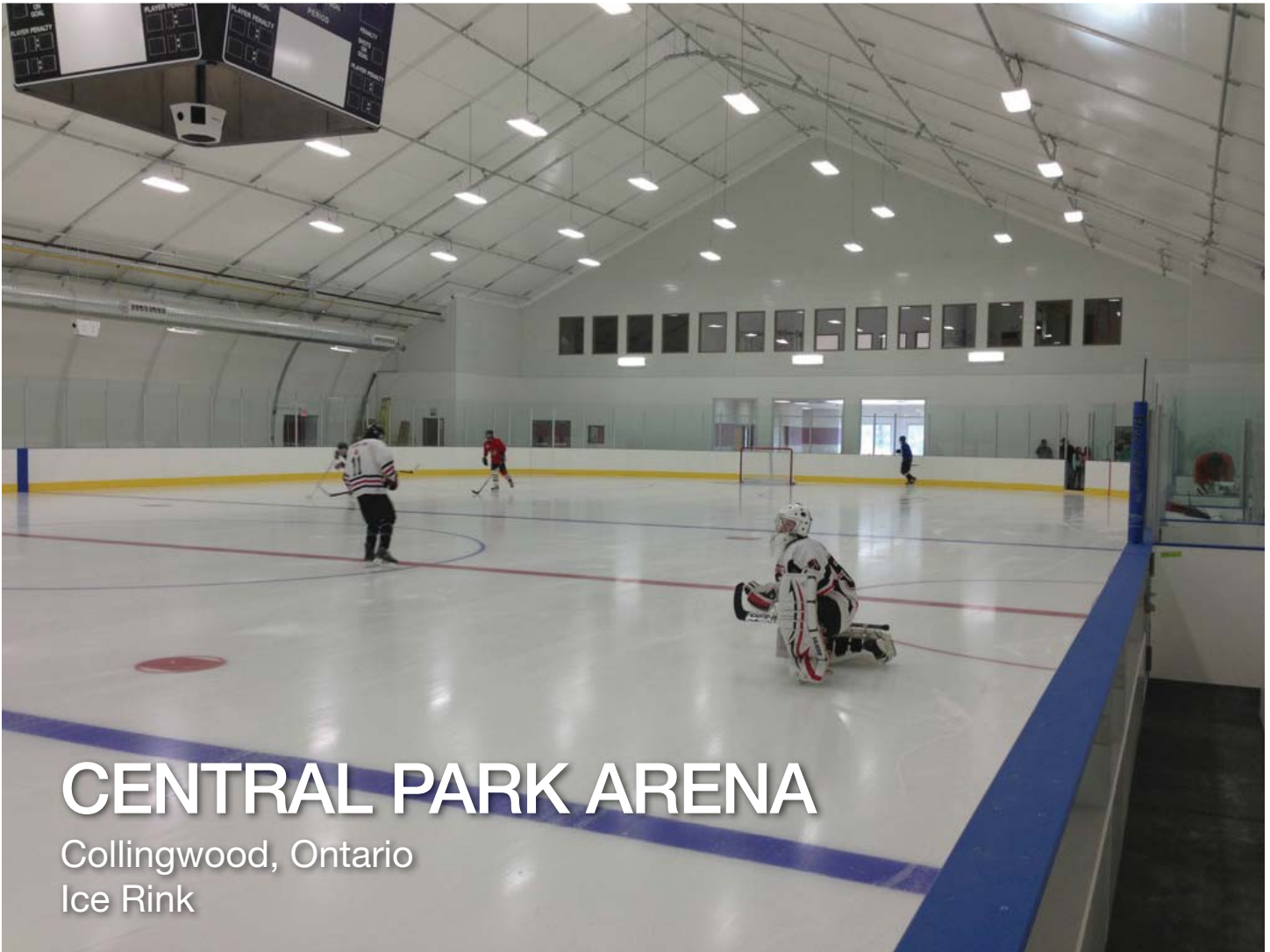






# Innovative Building Solutions

Engineered & Manufactured by Sprung Instant Structures



## CENTRAL PARK ARENA

Collingwood, Ontario  
Ice Rink

### Project Report:

Collingwood now has a second ice rink for year-round use, located in Central Park, to complement the Eddie Bush Arena.

The new rink is a full size, 85ft by 200ft ice surface, complete with premium dasher boards and glass. There is interior spectator seating for 390 people, and a mezzanine lounge for viewing. The lounge can be rented for special events and presentations.

There are six dressing rooms for players, including a dedicated female dressing room. As well, the referee room is capable of accommodating eight referees.



## Mayor's Message – Central Park Arena

The Town of Collingwood is growing, and as a municipality we need to ensure that our infrastructure and facilities meet the needs of our current and future residents, at a cost we can afford.

In our community we have an historic, downtown arena, however we heard from our residents and visitors that an additional ice surface was needed.

Sprung Structures was a great solution: a unique, patented, energy efficient, ready to use structure to house a full-size ice-pad allowing us to double our available ice time.

A state-of-the-art refrigeration system and a high-insulation factor in the roof and walls ensure that the building is energy efficient. Our users have said the ice surface is of exceptional quality!

The Sprung Company has provided Collingwood with a showcase, state-of-the-art facility, which is the envy of many communities.



Mayor Sandra Cooper  
Town of Collingwood

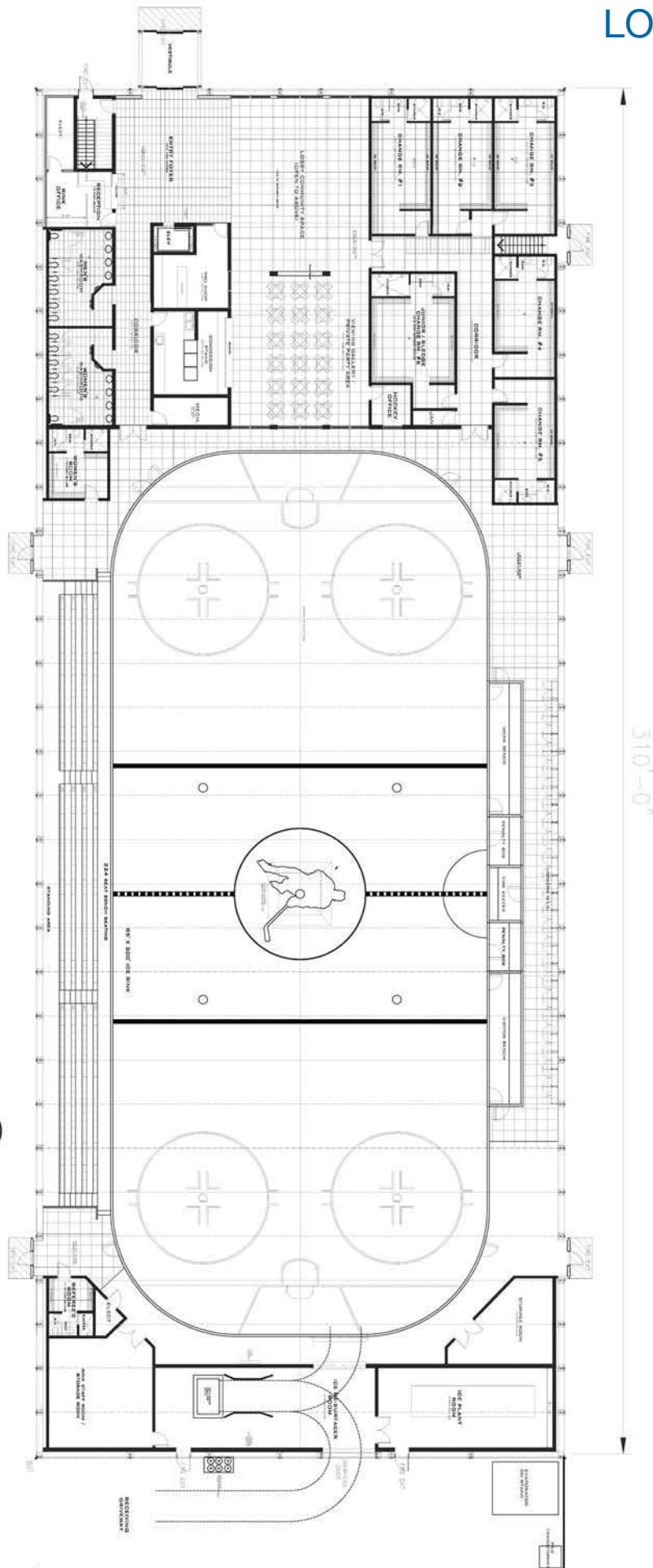


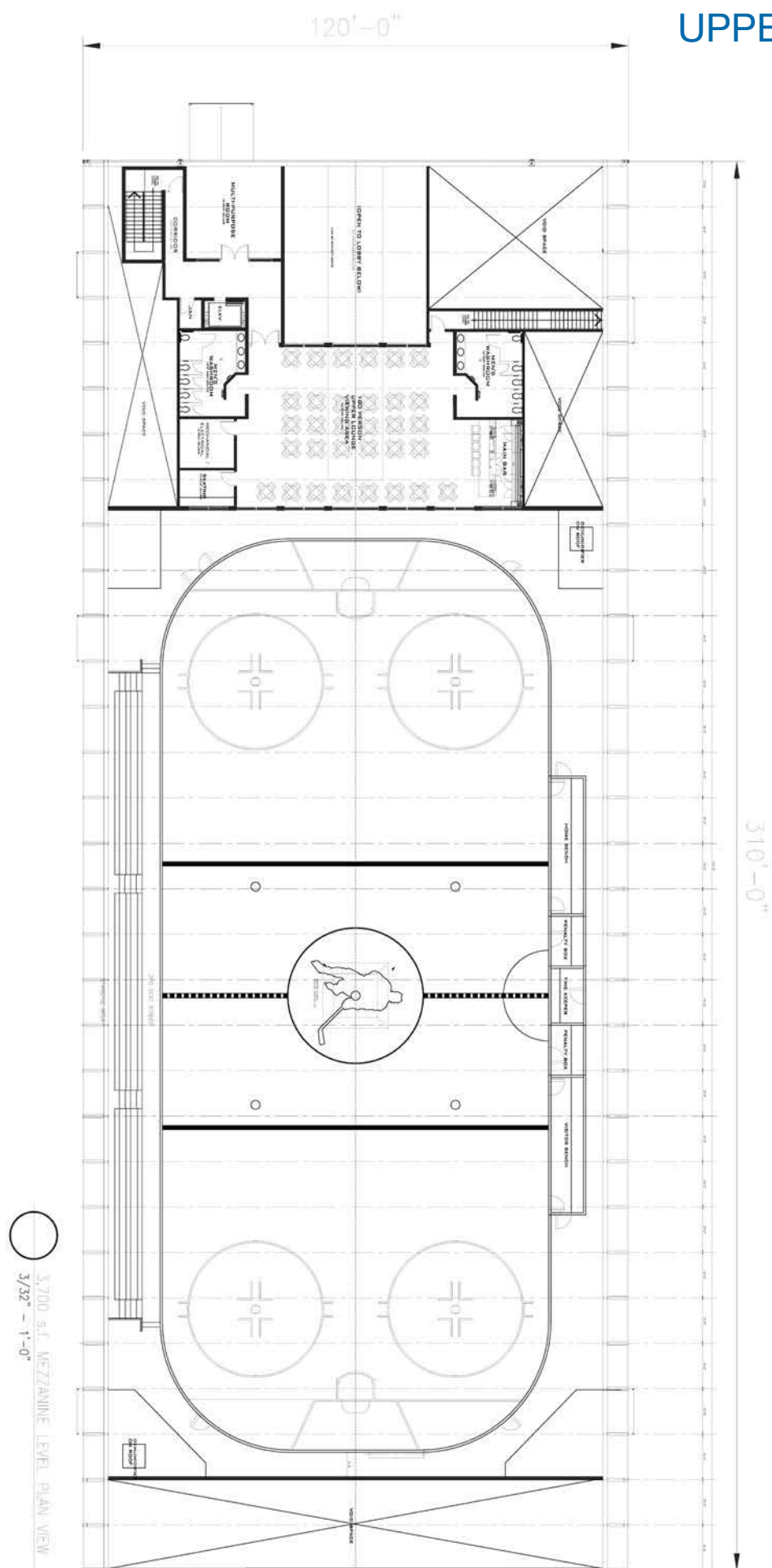
*Town of Collingwood Council at the grand opening of the new Central Park Arena – A Sprung Structure!*



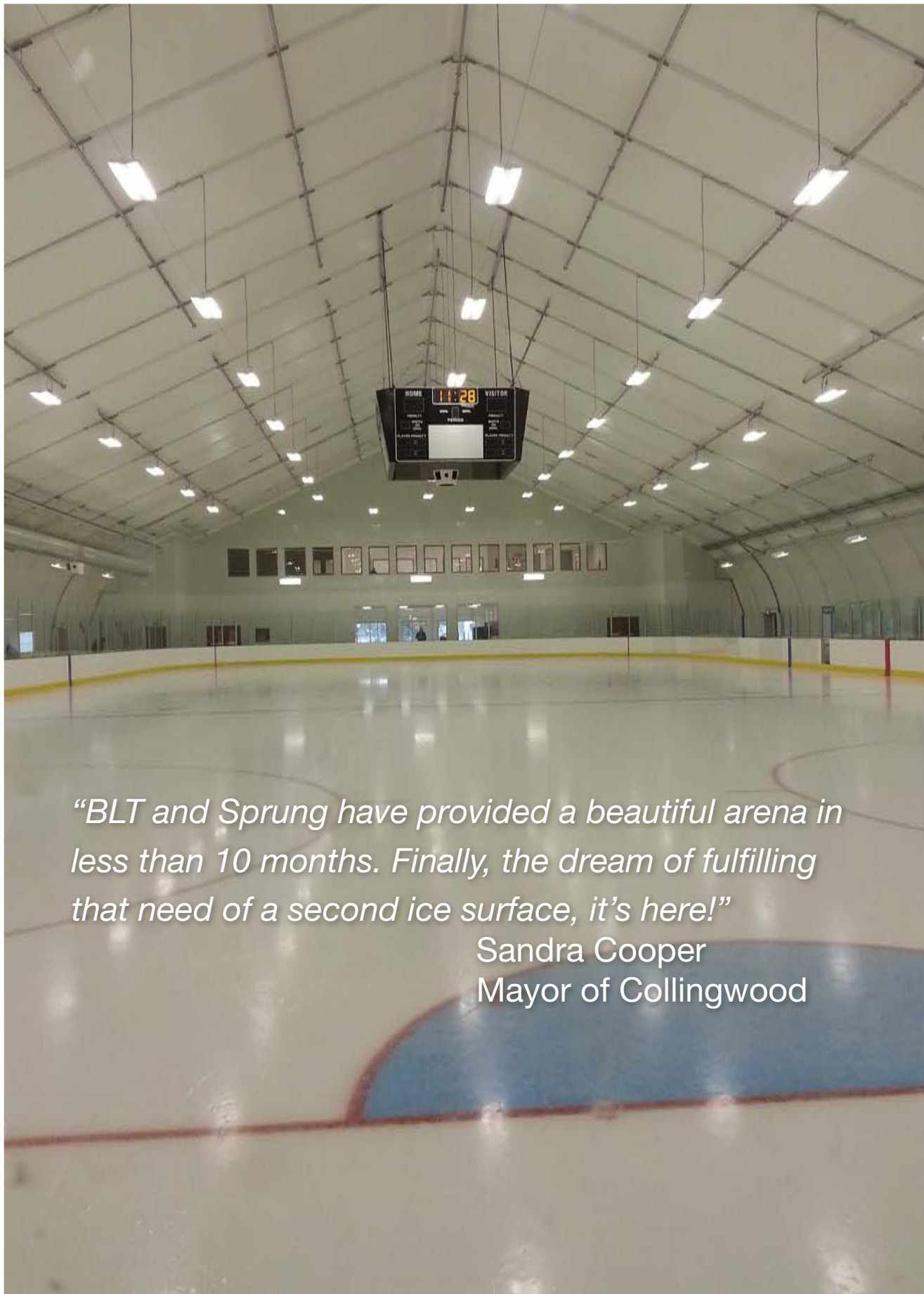


○ LOWER LEVEL PLAN VIEW  
3/32" = 1'-0"









*“BLT and Sprung have provided a beautiful arena in less than 10 months. Finally, the dream of fulfilling that need of a second ice surface, it’s here!”*

Sandra Cooper  
Mayor of Collingwood



