



Sprung
Since 1887



Sprung Performance Gymsnasiums



Sprung Structures

High Performance Fabric Building Solutions

Tensioned Membrane Structures. Available Immediately from Inventory.



Martensville Athletic Pavilion

City of Martensville, Saskatchewan

Project Report:

140' wide x 290' long Sprung Structure

The City of Martensville, Saskatchewan, Canada, working in conjunction with the Saskatchewan Board of Education and the Prairie School Division looked to build a much needed athletic facility that could be utilized by both the city and local high school. The school could use the facility during the day and the community could use it both during the day and in the evening.



In the fall of 2013 construction started on the 140' wide x 290' long insulated Sprung structure, which was erected and enclosed quickly so that the interior of the building could be worked on while being protected from the outside elements.

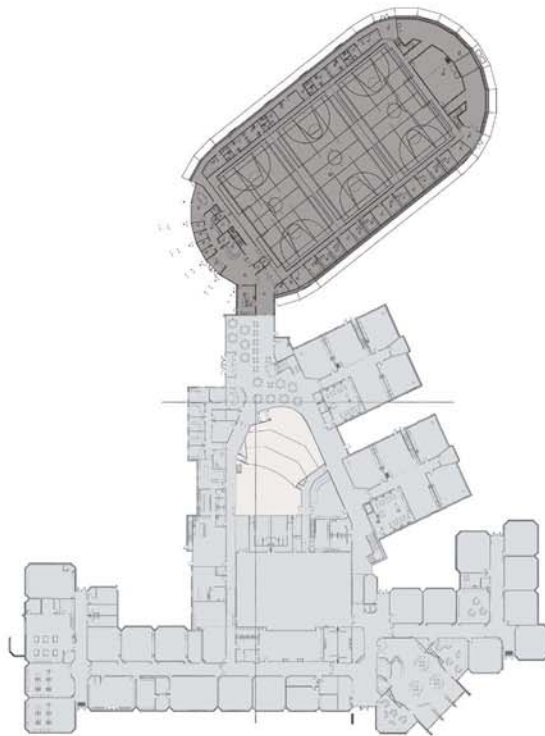
In the fall of 2014, the Martensville Athletic Pavilion (MAP) opened its doors to the high school and the community. The facility boasts 3 hardwood courts all of which can be separated with the 2 drop down curtains. The floors can be converted to a full or partial soccer field with the soccer flooring that can be added or removed in 3 hours. The MAP also has an elevated 200 meter curved running track, fitness area, dance and yoga studios, multi-purpose space, offices and concession stand. The Sprung structure exterior membrane includes custom translucent daylight panels which are strategically placed to add additional natural daylight over the playing surfaces. With the money saved not having to build a gymnasium inside the high school, the city was able to also build a 500 person theatre that is used for the high school during the day and the community in the evening.

On December 18th, 2014 the City of Martensville, the Saskatchewan Ministry of Education and the Prairie Spirit School Division held the grand opening of the Martensville Athletic Pavilion. The MAP, completed for less than \$10 million dollars, is a success for everyone involved.

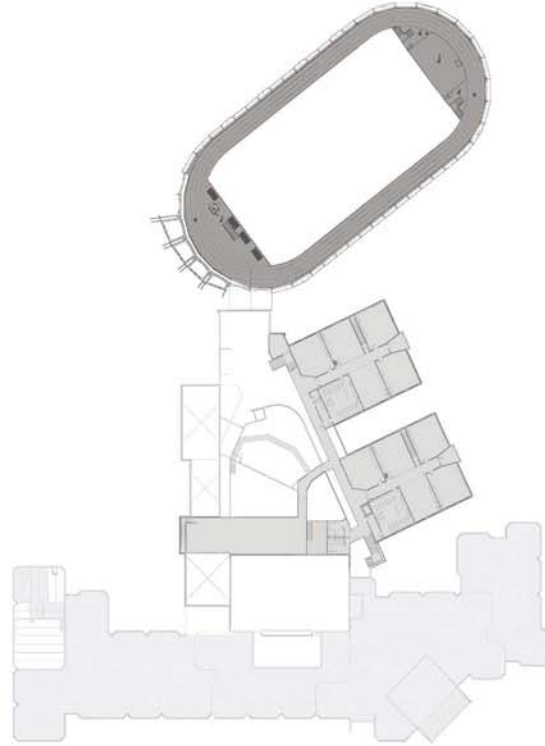


- 50,000 square feet of space
- 3 full-size basketball courts
- 3 full-size volleyball courts or six cross-courts
- 12 badminton courts
- 10 individual team rooms
- Multi-purpose rooms for martial arts and yoga, dance, etc
- 4-lane 200 meter running track (cleated footwear allowed)
- Fitness area with weights and cardio equipment
- Artificial turf is available to cover individual courts or the entire gym floor
- Reception area
- Concession





FIRST FLOOR PLAN / GYMNASIUM PLAN

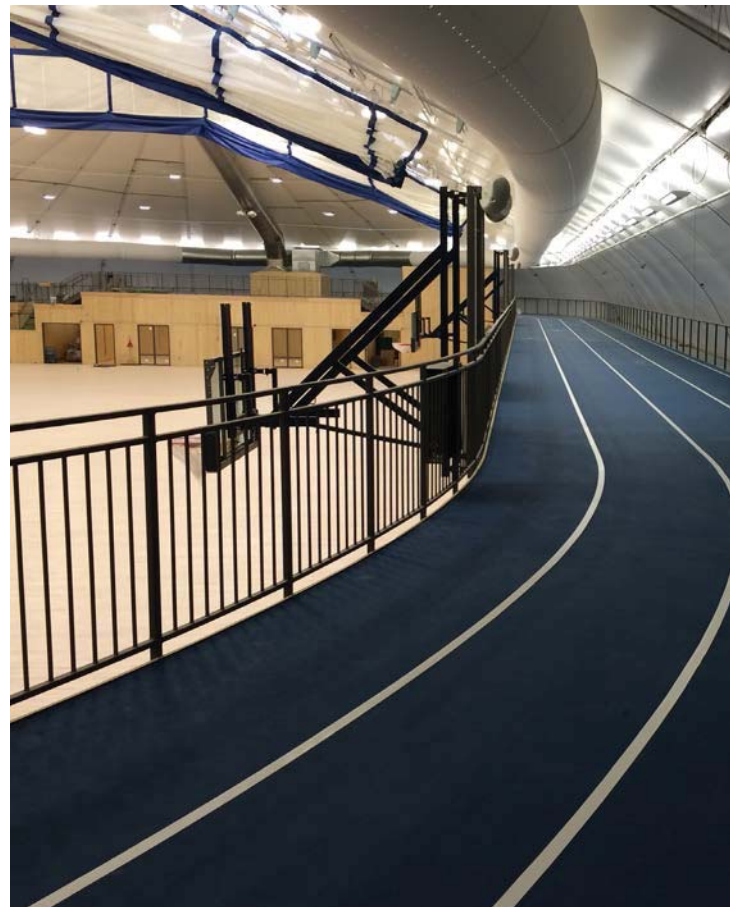


SECOND FLOOR PLAN / MEZZANINE PLAN

MARTENSVILLE MULTI-PURPOSE FACILITY

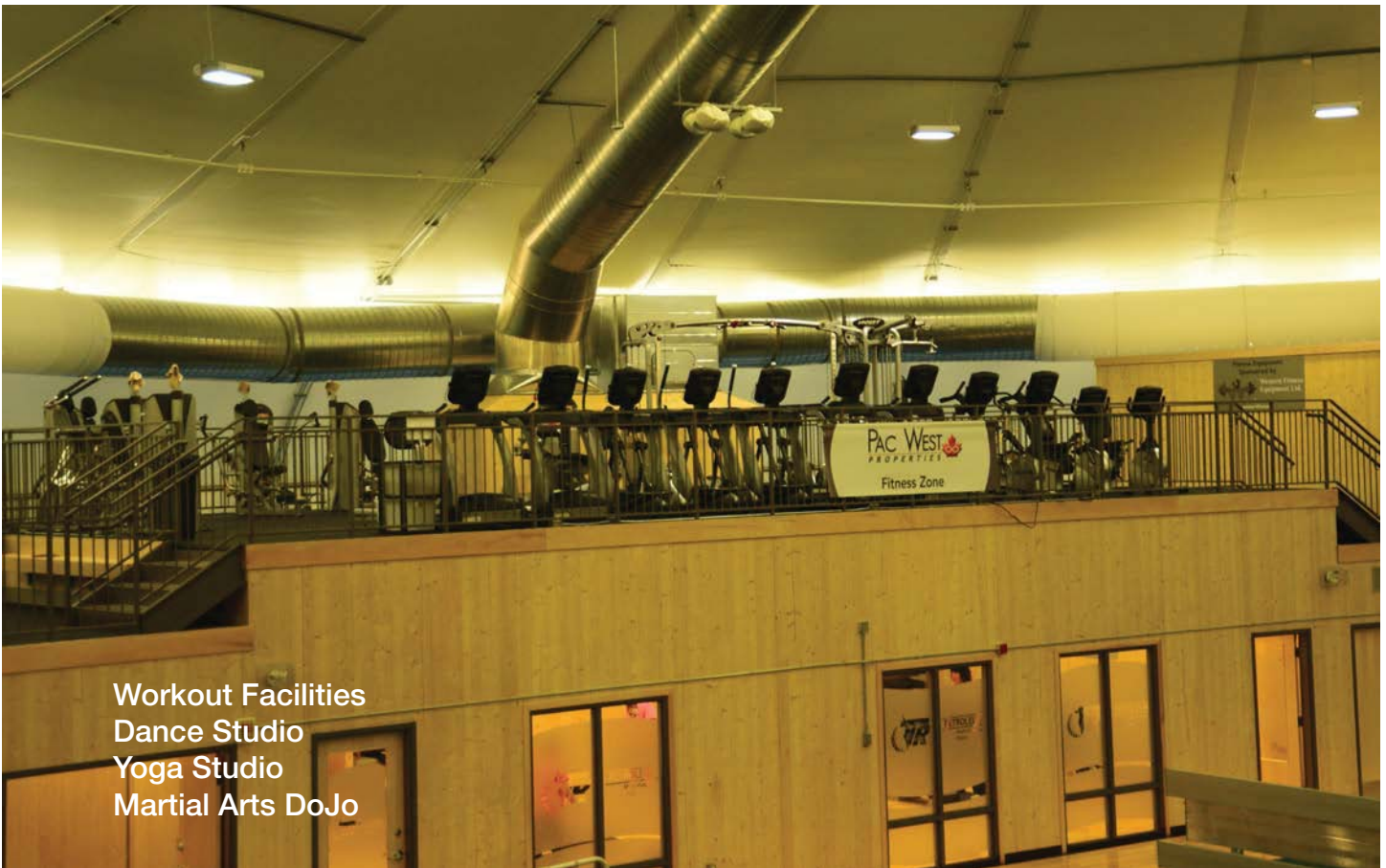








Corporate Sponsorship Opportunities

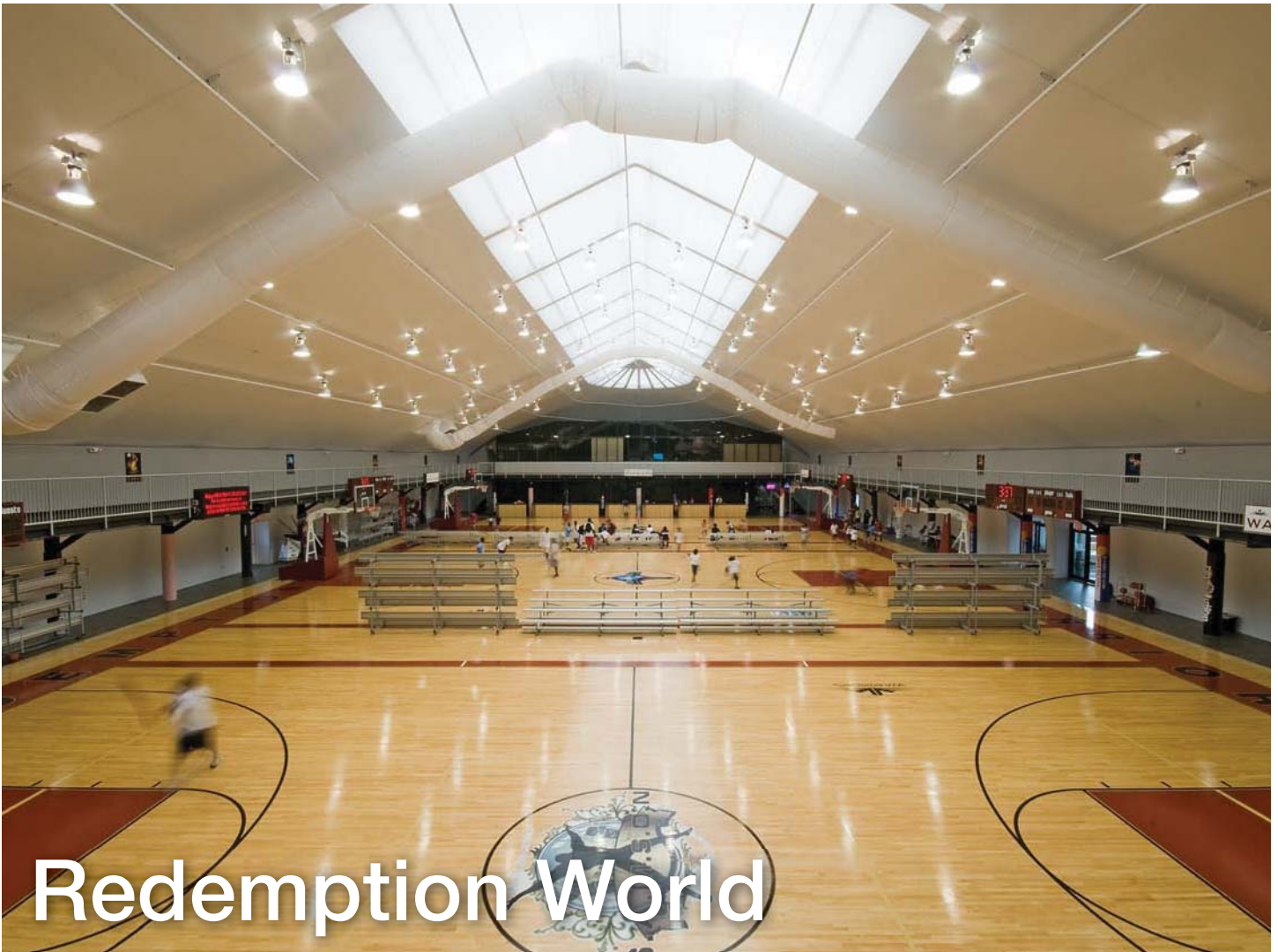


Workout Facilities
Dance Studio
Yoga Studio
Martial Arts DoJo



Innovative Building Solutions

Engineered & Manufactured by Sprung Instant Structures



Redemption World

PROJECT DESCRIPTION:

Redemption World
Outreach Center
Greenville, SC

120' x 300' Imagine Center

OVER 48,000 SQUARE FEET INCLUDING THE UPPER LEVEL MEZZANINES AND ELEVATED RUNNING TRACK

Inside the Structure is complete with:

- 3 full size hardwood floor basketball courts
- 2nd story extended walking/running track (1/5 mile long)
- Spinning Studios
- Free weight areas
- Women's only area
- Full cardio theater with multiple flat panel monitors
- Fully-equipped, state of the art conference room, with AV capabilities, wireless for corporate member meetings, staff retreats and more!



Innovation | versatility | reliability

TOLL FREE 1-800-528-9899
OR (403) 245-3371 www.sprung.com

GENERAL NOTES:

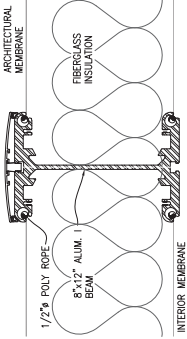
1. ALL PERSONNEL DOORS C/W HOODS.
2. STRUCTURE IS TO BE INSULATED WITH FIBERGLASS BATT INSULATION C/W INNER LINER, TO SKYLIGHT LEVEL ONLY.
3. INNER & OUTER MEMBRANE TO BE FINISHED TO CONCRETE USING ALUM. FLAT BAR.
4. STRUCTURE MEMBRANE MEETS CALIFORNIA STATE FIRE MARSHAL, LOS 11-1, AND UL1519 SPECIFICATIONS.
5. THIS STRUCTURE IS DESIGNED TO SHED SNOW. THE PERIMETER OF THE STRUCTURE SHOULD BE KEPT CLEAR.
6. WHEN DESIGNING A HEATING, VENTILATION & AIR CONDITIONING SYSTEM FOR THIS TYPE OF BUILDING, IT IS IMPORTANT TO DESIGN THAT THIS SYSTEM INVOLVES MORE THAN ONE ZONE. THE ZONES SHOULD BE OPEN TO ONE ANOTHER. THIS PROCEDURE WILL RESULT IN COMPARISONS OF VARIOUS MEMBRANE TYPES WITHIN THE STRUCTURE. IT WILL BE THE RESPONSIBILITY OF THE ARCHITECT/OWNER TO APPLY TO BE USED STRAINING & INDEPENDENT OF SPRUNG STRUCTURE.

DESIGN LOADS

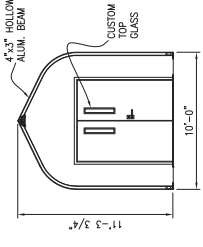
MINIMUM PERMISSIBLE 30 BUILDING CODE, SEC. 2001 WIND SPEED: 90 mph 3 SEC. DUST GROUND SNOW LOAD & WIND C (SEE SNOW SHED REPORT)

SIGNATURE SERIES

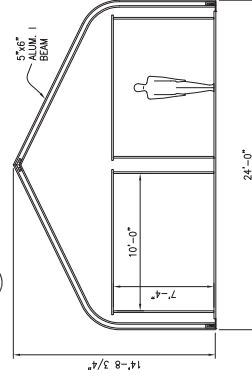
3-10/27/2007	300.0	1/16"=1'-0"	120'-0" x 300'-0"	GYMNASIUM	DATE	1/16/2007
3-10/27/2007	300.0	1/16"=1'-0"	120'-0" x 300'-0"	GYMNASIUM	OWNER	RECREATION WORLD OUTREACH CENTER
3-10/27/2007	300.0	1/16"=1'-0"	120'-0" x 300'-0"	GYMNASIUM	SCALE AS NOTED	PO7300.0
3-10/27/2007	300.0	1/16"=1'-0"	120'-0" x 300'-0"	GYMNASIUM	DRAWING #	



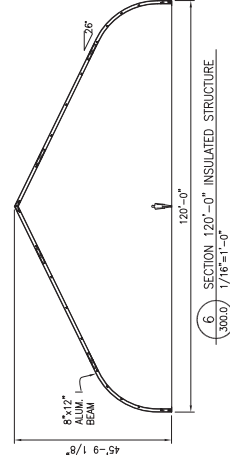
3. 8'x12' INSUL. BEAM SECTION
300.0 3/4"=1'-0"



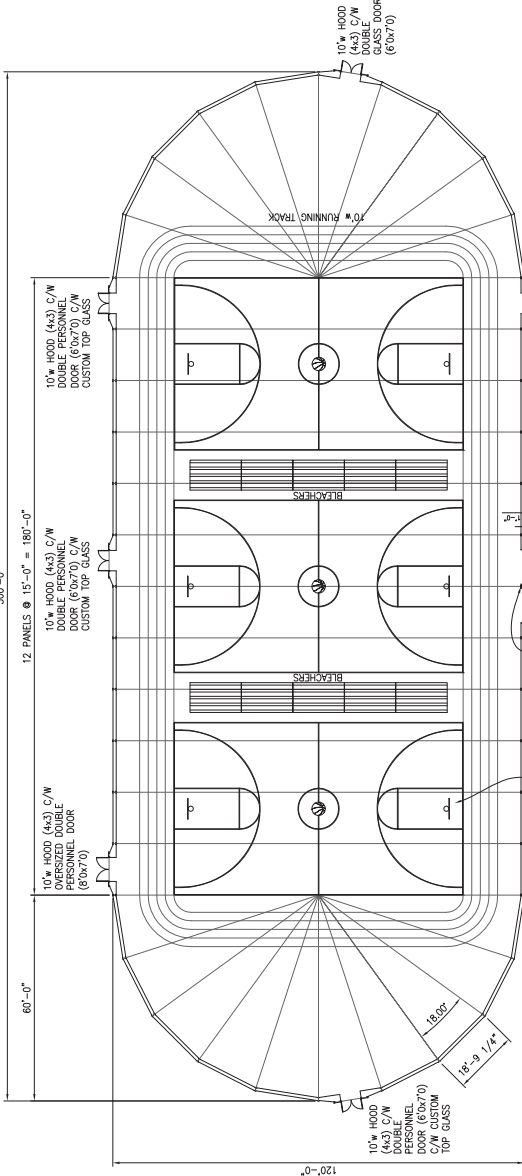
4. SECTION 10'-0" HOOD
300.0 1/4"=1'-0"



5. SECTION CUSTOM 24'-0" HOOD
300.0 1/4"=1'-0"

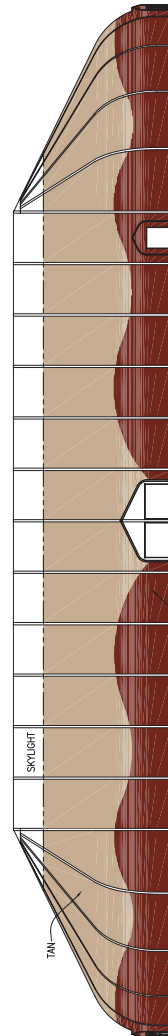


6. SECTION 120'-0" INSULATED STRUCTURE
300.0 1/16"=1'-0"



1. OPEN PLAN VIEW
300.0 1/16"=1'-0"

INTERIOR SHOWN FOR REFERENCE ONLY. FINAL LAYOUT DESIGNED & SUPPLIED BY OTHERS.



2. ELEVATION
300.0 1/16"=1'-0"

DRAWING APPROVAL

Signature _____

Print Name _____

Date: _____

Confirmation of wind speed at site per the local building dept. _____

Building Code: _____

MPH, Exposure _____

Initial _____







