

# GUIDE TO PHYSICAL DISTANCING

## HOW TO OPEN & BE COMPLIANT



# PHYSICAL DISTANCING

Tents, shelters and personal barriers will play a critical role as **Facilities** begin to re-open.

**MAXIMUM  
PROTECTION**

**COVER-SHIELD  
CONNECT™**



As we enter the next phase, challenges will be met head on as you try to keep your employees and customers safe. These ideas should help every business with following the social distance guidelines, and being able to make the most out of what can be done with outside spaces. Covermaster's guide to social distancing will be a great asset for your community in the next few weeks to months.



**NEW  
COVERMASTER  
PRODUCT!  
2020**



**LARGE  
COVER-SHIELDS  
are Perfect for  
HALLWAYS**



**Long lines due  
to Social  
Distancing?**

**Check  
this  
out!**



## **DINING DIVIDERS™:**

- Engineered specifically to perform for the hospitality industry
- Adapts to virtually any configuration for more separation in open spaces
- Cathedral window design adds stylish elegance
- Easy to clean and store away
- Lightweight, temporary option to create barriers

## **COVER-SHIELD™:**

**SIZES RANGE FROM 2' x 2' - 6'6" x 10'**

- Easy to clean
- Sturdy
- Lightweight barrier
- Clear Vinyl
- Economical
- Designed to create a safe & healthy work environment

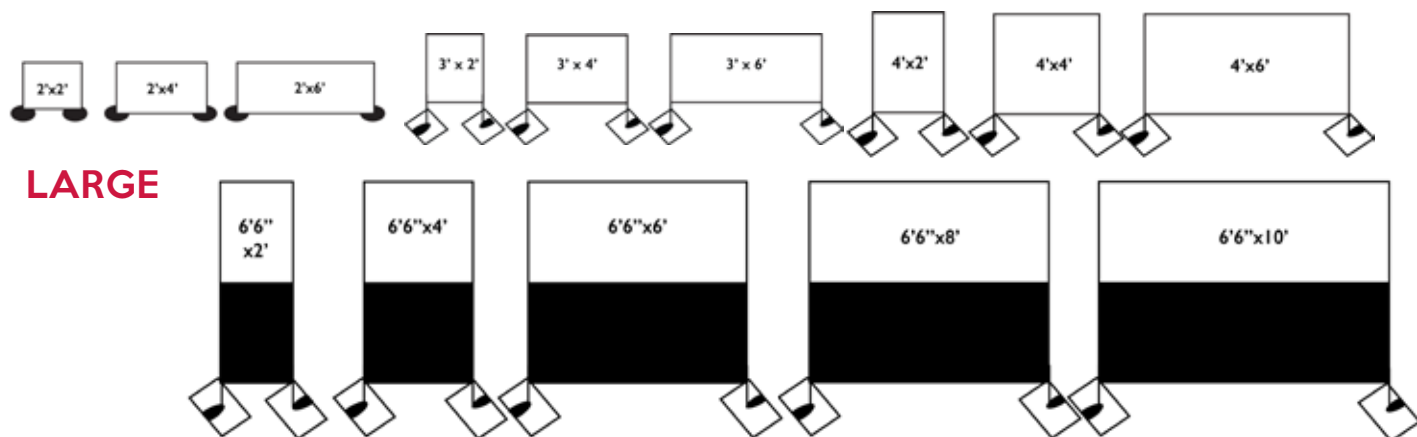
## **MASTER-QUEUE:**

- Engineered specifically to distancing people in limited spaces
- Adapts to virtually any frame Pavilion Tent configuration
- With 6 foot separation it allows 2.5 times more people within a space versus a traditional line
- Easy to assemble
- Lightweight, temporary option to create a maze divider underneath a Pavilion Tent

# COVER-SHIELDS™ LARGE



**SMALL** 8" Leg extension kits can be purchased to create a pass through on all small Cover-Shields



Needing an extra wall to provide more separation? Cover-Shield was designed with you in mind. Featuring a clear vinyl barrier that allows you to feel safe without feeling isolated.

Cover-Shield comes in a variety of sizes to ensure that you have the best divider for your space. Sizes ranging from 2' x 2' to 6'6" x 10'. Small Cover-Shields are designed to sit on desks, counters, tables and workspaces. Large Cover-Shields are designed to sit on the ground and create barriers for lines, hallways and anything in between!

Cover-Shield Dividers feature a clear vinyl with pockets on all four sides. Securing the vinyl to the steel frame attached along with the sturdy base plates keeps the divider from tipping over. Base plates on the 3', 4' and 6'6" dividers are designed to overlap so the barriers are seamless when aligned with one another. Along with taking up a minimum amount of room. This virtually break-proof design will not crack, split or chip making one of the top sellers on the market.

**3', 4', 6'6" bases are designed to overlap so the barriers are seamless when aligned with one another.**

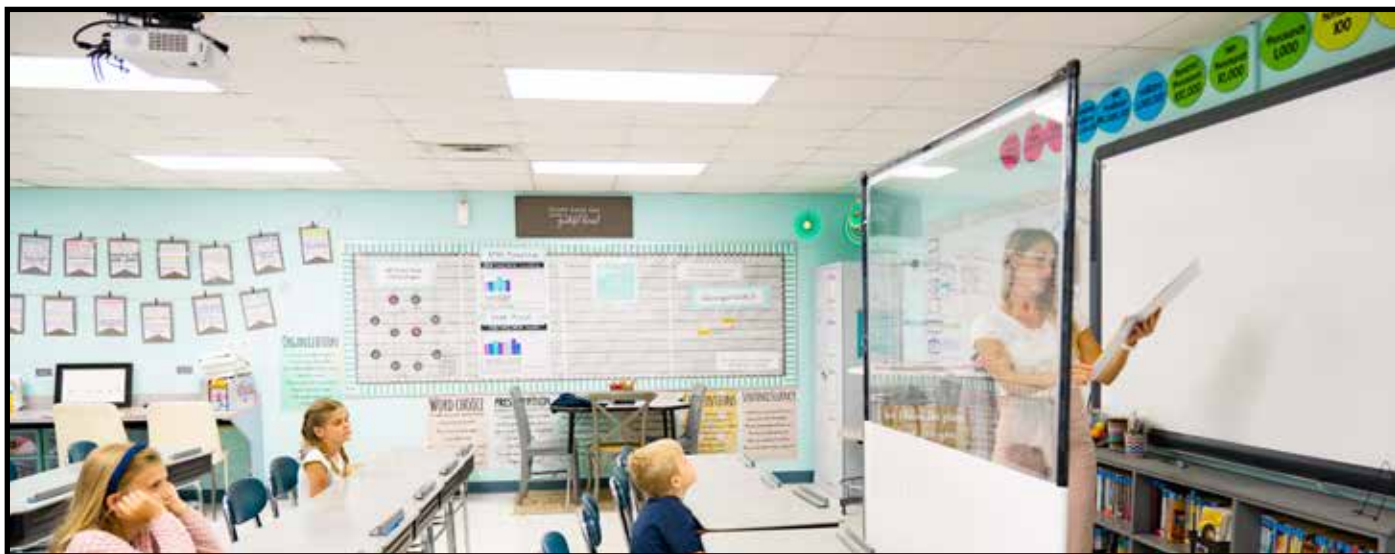
# COVER-SHIELDS™ LARGE



**COVER-SHIELD™ LARGE 6'6" x 10'**



# COVER-SHIELDS™ LARGE





## Protect Teachers & Students with Small & Large Cover-Shields™

- Can be used in a variety of settings.
- Desk
- Lunch Room
- Library
- Teacher's Desk
- Barrier between class and Teacher
- Reading Time
- Office counter
- Hallways

# COVER-SHIELDS™ SMALL

## PERFECT FOR SCHOOLS



### COVER-SHIELD™ SMALL

< 2' x 4'

8" leg extensions can be  
purchased to create a  
pass through on all small  
Cover-Shields

# COVER-SHIELDS™ SMALL



**COVER-SHIELD™**  
**SMALL 4' x 4' >**



## MAXIMUM PROTECTION





## CUSTOMIZABLE TO YOUR NEEDS



Covermaster's personal protection screens provide a barrier across the table along with DOWN BOTH SIDES GIVING YOU MAXIMUM PROTECTION.

**NEW  
COVERMASTER  
PRODUCT!  
2020**



**THIS IS ONLY ONE OF THE REASONS WE ARE CONFIDENT  
OUR SCREENS WILL BE THE BEST ON THE MARKET.**

# COVER-SHIELD CONNECT™

**Endless ways to use COVER-SHIELD Connect  
LECTURE HALLS, CAFETERIAS, CLASS ROOMS,  
SCIENCE LABS, MEETINGS.**

**NEW  
COVERMASTER  
PRODUCT!  
2020**



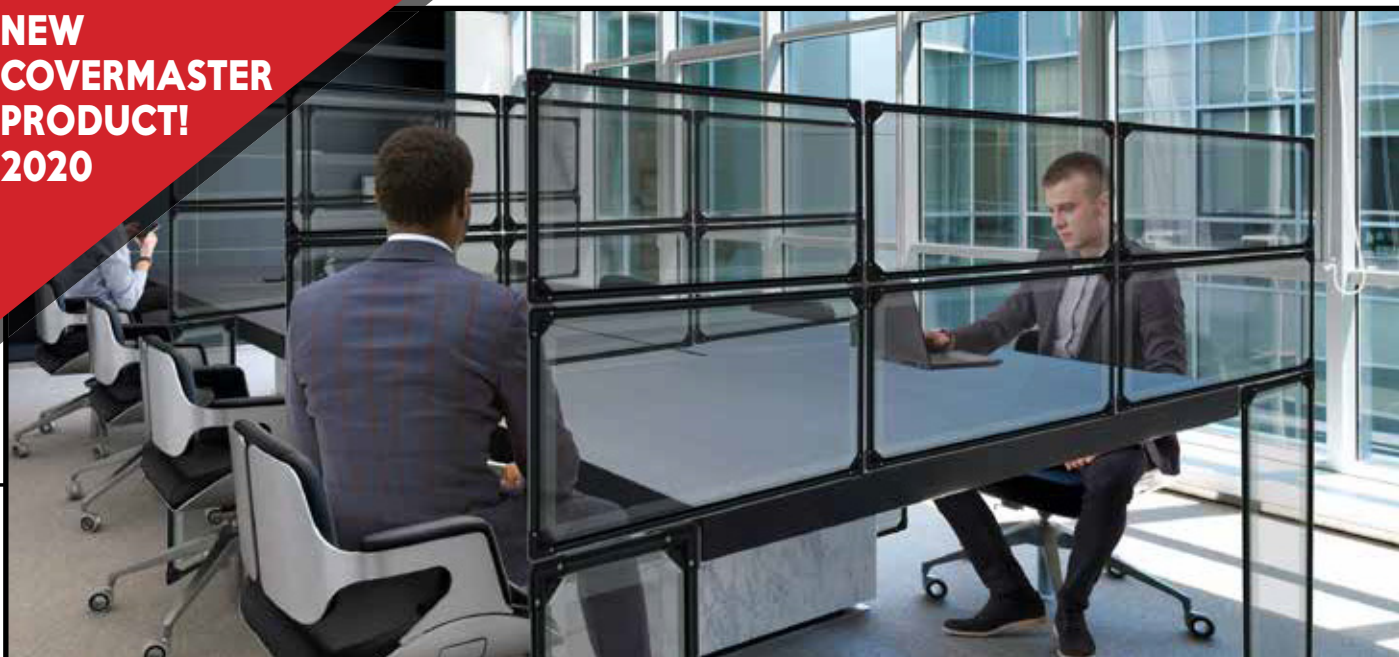
**CAN PURCHASE ADDITIONAL FASTENERS TO CONNECT SCREENS  
MAKING THEM PERFECT FOR EVERY SETTING.**



**NEW  
COVERMASTER  
PRODUCT!  
2020**



**NEW  
COVERMASTER  
PRODUCT!  
2020**



# COVER-SHIELD CONNECT™



These sleek non-breakable, light weight screens can be customized to fit your needs.

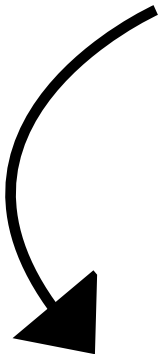
Hinged together to make customizing easy for everyone to take with them, or leave stabilized

**NEW  
COVERMASTER  
PRODUCT!  
2020**





## PERSONAL PROTECTION SCREENS



Our personal protection screens form a physical barrier against coughing, sneezing and other hazards, creating a safe transaction environment for staff, customers and visitors.



These safety screens can be used in a variety of business environments, including retail, grocery stores, offices, hospitals and healthcare practices, banks, professional services, restaurants, spas, salons, bars, and more.

# SCHOOLS & UNIVERSITIES



We have a Pavilion Tent for your every need no matter the size.

Allowing for more capacity while everyone struggles adjusting to the “new normal”



# SCHOOLS & UNIVERSITIES



Temporary Cafeteria Using MasterShield Plus  
Turf Protection and Pavilion Tent





We have a Pavilion Tent for your every need no matter the size. Restaurants to schools, along with summer camps and government buildings, a Pavilion Tent can take social distancing to the next level.

Allowing for more capacity while everyone struggles adjusting to the “new normal”

# SCHOOLS & UNIVERSITIES

## CONFIGURATION IDEAS

**30' x 60'**

**40' x 80'**

**18M x 30M**

Fall Semesters might look a lot different in the coming school year. Schools might want to consider Pavilion Tents as temporary classrooms allowing students to spread out over a larger area than the typical lecture hall. A possible configuration is 8' conference tables with a chair on each end facing the professor. There is likely to be some type of need for screening Pavilion Tents to get into school events and sporting facilities to ensure the health of the students.





**OPEN AT FULL CAPACITY FALL 2020**



# COVER-SHIELDS™ LARGE

**NEW  
COVERMASTER  
PRODUCT!  
2020**



## DORM ROOMS

# COVER-SHIELDS™ LARGE



**NEW  
COVERMASTER  
PRODUCT!  
2020**



# COVER-SHIELDS™ SMALL



We have a Cover-Shield™ to meet your needs no matter the size.





Clear vinyl barriers give everyone the sense of security of being protected out in the public as states and businesses re-open.



# COVER-SHIELDS™ LARGE

**2' x 2' ▪ 6'6" x 10' ▪ Custom sizes available**

- STADIUMS
- SCHOOL HALLWAYS
- RECREATION CENTER HALLWAYS
- RELIGIOUS FACILITIES
- GYMS
- CONCESSION STANDS
- LOCKER ROOMS
- OPTIONS ARE UNLIMITED

**NEW  
COVERMASTER  
PRODUCT!  
2020**



# COVER-SHIELDS™ LARGE



Social distancing in line - Stadiums, Gyms, Fitness Centers, School, or any crowded area. Our clear vinyl personal partitions offer a sleek design, won't crack or break and allow you to feel safe, but not claustrophobic.

**NEW  
COVERMASTER  
PRODUCT!  
2020**



# DINING DIVIDERS™



## DINING DIVIDER BY COVERMASTER - PHYSICAL DISTANCING SOLUTION

A perfect solution for one of the industries that has been hit the hardest - hospitality. The Dining Divider is made to help separate patrons from one another and promote social distancing. It comes in two versions, deluxe and standard. Both versions feature a cathedral window to be separated, but not feel isolated. This is the ideal solution for restaurants and bars that are faced with reduced capacity issues and wanting to make their customers feel at ease when dining out.

### DELUXE DINING DIVIDER:

- Keder Top
- Hemmed Edges
- Semi closed pocket at bottom
- Heavy wheighted pipe
- eyebolts for hanging
- 16 oz blackout fabric

### STANDARD DINING DIVIDER:

- Pocket Top
- Raw Edges
- Pocket at bottom
- PVC pipe
- Holes for hanging
- Lightweight fabric

### DINING DIVIDER FEATURES & BENEFITS:

- Engineered specifically to perform for the hospitality industry
- Adapts to virtually any configuration for more separation in open spaces
- Cathedral window design adds stylish elegance
- Easy to clean and store away
- Lightweight, temporary option to create barriers

### DINING DIVIDER OPTIONS:

- Deluxe and standard options available
- Wide width measures 7'10" tall x 6'6" wide
- Narrow width measures 7'10" tall x 4'8" wide

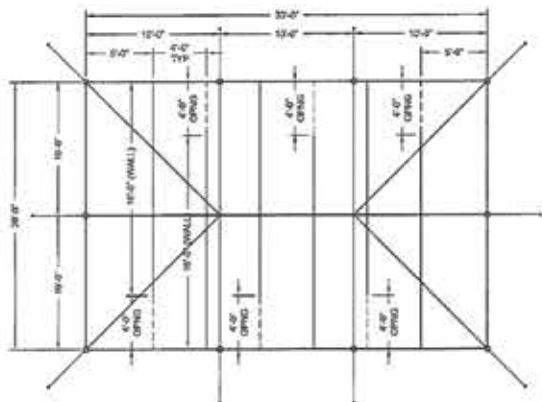
## 2.5 TIMES MORE PEOPLE CAN FIT IN THE SAME SPACE WHILE SEPARATED



How are individuals going to get into sporting events, fitness centers and concerts etc. without lines being insanely long if people can't be within 6 feet of one another? Covermaster wants to help solve the problem of keeping protected while saving space.

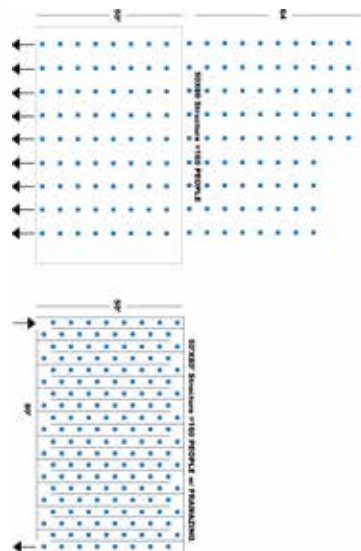
Master-Queue is an internal partition system that attaches to the inside of Pavilion Tents that creates a 7 foot tall maze dividers. Compared to a traditional line, 2.5 times more people can fit in the same space while remaining separated.

Master-Queue features clear vinyl top half so that people can see around them and a solid vinyl bottom half with 6 foot distancing markings found at the bottom. Attaching Master-Queue to any frame Pavilion Tent is made easy by securing the provided cables to the outside frame of the Pavilion Tent and using the tightening device provided to secure the Master-Queue wall in place.



### MASTER-QUEUE DIVIDER SYSTEM FEATURES & BENEFITS:

- Engineered specifically to distancing people in limited spaces
- Adapts to virtually any frame tent configuration
- With 6 foot separation it allows 2.5 times more people within a space versus a traditional line
- Easy to assemble
- Lightweight, temporary option to create a maze divider underneath a tent



# Master-Queue



## CONFIGURATION IDEAS

**20'x 40'**

**30' x 60'**

**40' x 80'**

**10M x 30M**

▪ **Break Rooms** ▪ **Dining Areas**  
**Office Space**

Large Pavilion Tents in parking lots can be a great solution for stadiums and schools that are headed back to work and need to comply with social distancing guidelines. Facilities may need additional break-room space or dining areas. Maybe they have too many desks that are in close proximity and need more office space.



### **KEEP IN MIND:**

Additional items such as flooring could be added. Do not limit yourself to just Pavilion Tents.

# PRE-SCREENING STATIONS

## CONFIGURATION IDEAS

**10' x 60'**

**20' x 40'**

**40' x 80'**

Pre-screening is also an important measure that is being utilized by many facilities to test that employees that arrive for work are in good health and don't infect others.



# PRE-SCREENING STATIONS



## MASTER-QUEUE!

Fit 2.5 times the people in allowed space.

**AMAZING**

## CONFIGURATION IDEAS

10' x 60'

20' x 40'

40' x 80'

**NEW  
COVERMASTER  
PRODUCT!  
2020**



**NEW  
COVERMASTER  
PRODUCT!  
2020**



**NEW  
COVERMASTER  
PRODUCT!  
2020**



Extra areas can be utilized for social distancing such as break rooms, lunch areas or smoke shacks.

# PRE-SCREENING STATIONS

**2.5 TIMES THE PEOPLE IN LINE,  
PLUS...FOLLOWS THE PHYSICAL DISTANCING GUIDELINES!!!**

Covermaster has designed an accessory that can be added to your Pavilion Tent.

This set of dividers are designed to accommodate 3 times the people in a small area,

Such as stadium, fitness centers, gyms or large event venues.

The clear vinyl gives you a sense of openness in a confined area while keeping you safe.

**NEW  
COVERMASTER  
PRODUCT!  
2020**



## CONFIGURATION IDEAS

**40' x 60'**

**80' x 200'**

**10' x 10'**

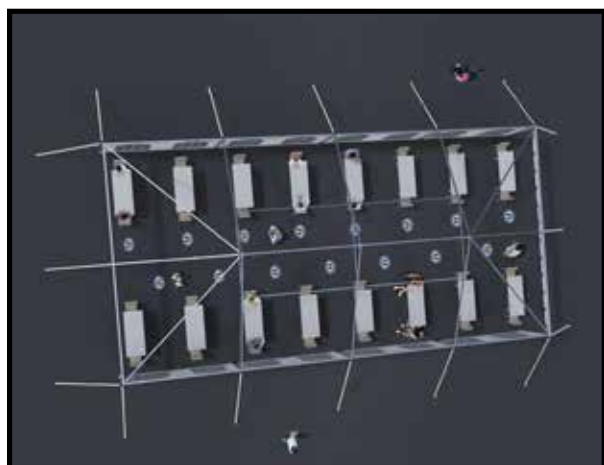
**20' x 20'**



There are a few different ways that social distancing measures can be taken when it comes to religious services. A large Pavilion Tent could be set up with chairs set up in groups of 5 or 6 to allow for families to sit together and distanced from others according to guidelines. This would likely provide a lot more space for individuals over traditional pew type seating.

Another way religious services could be conducted is have a smaller Pavilion Tent or two set up in a parking lot and people can listen to a service much like they would a drive in movie or bring lawn chairs to join in on the service while socially distanced outside.

# RELIGIOUS FACILITIES



## CONFIGURATION IDEAS

**40' x 60'**

**80' x 200'**

**10' x 10'**

**20' x 20'**

**Thank you!**

**We are here to help YOU!**

**Please contact Covermaster  
if you have any questions.**

**1-800-387-5808**

**info@covermaster.com**



100 Westmore Dr., 11D, Rexdale, ON M9V 5C3  
3909 Witmer Rd., Niagara Falls, NY 14305

**1-800-387-5808**

Tel: +1-416-745-1811 • Fax: +1-416-742-6837  
[www.covermaster.com](http://www.covermaster.com) • [info@covermaster.com](mailto:info@covermaster.com)