

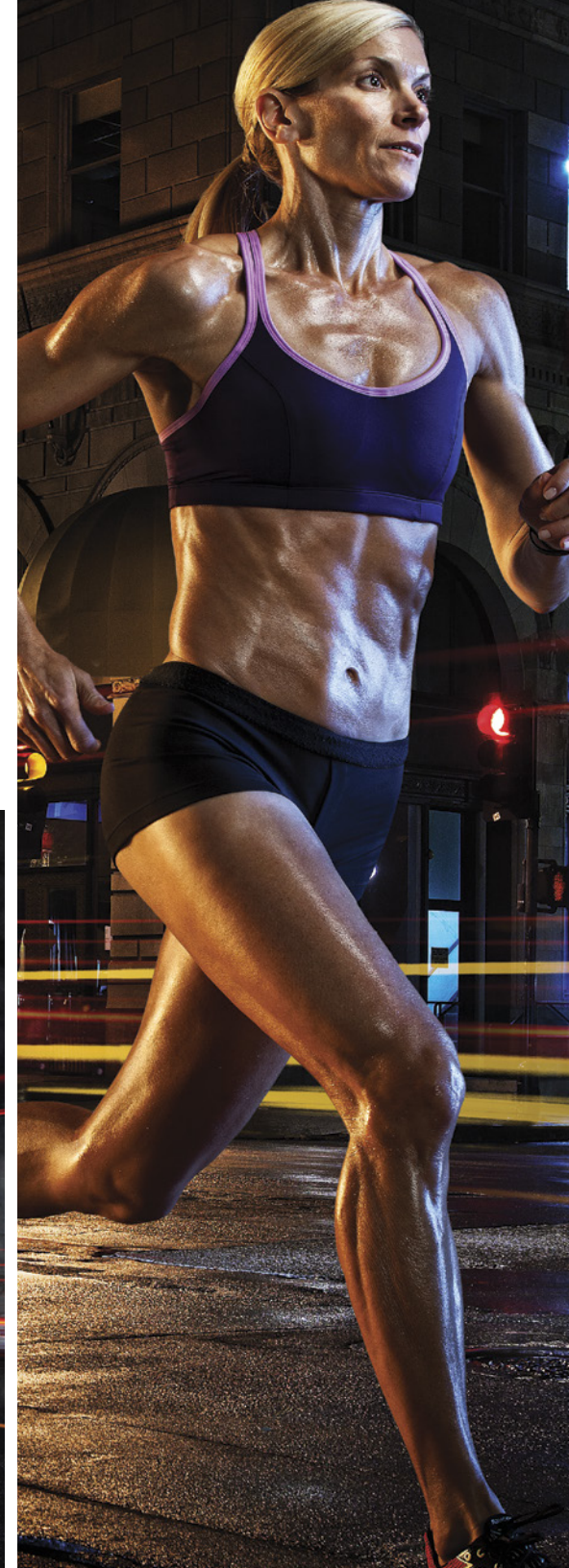
PURE MOTIVATION.



# CARDIO

Cardio is the heart of any facility. Nothing sets the pulse, or raises it quiet like cardio. No other machines draw more people in, create more energy or get more use, which is exactly why the choices you make in this section of your facility are perhaps the most important you'll make.

Star Trac's family of cardio equipment continues to set industry benchmarks in both form and function. From our trademark innovations like personal fans and a motivational track, to stylish, consistent and intuitive interfaces across the entire line, no other cardio equipment has brought more satisfaction to your floor year after year.





## E SERIES CARDIO

Innovation has led us into entertaining territory and nowhere is it more evident than in our E Series and eSpinner®. Designed to entertain as much as it makes you sweat, the E Series offers the most complete entertainment options on the market. What we didn't realize at the time was that we were at the forefront of what has now become an entirely new equipment category.

Featuring options like Netpulse on demand entertainment, integrated iPod® connectivity and high definition 15" screens, to a device-charging USB port, E Series and eSpinner are wired in every way for complete personal entertainment. The entertainment system is fully-integrated with built-in fans, heart rate monitor and the ability to pick, play and enjoy the entertainment solution of your choice. And with its sleek, modern design, it also looks as good as it entertains.

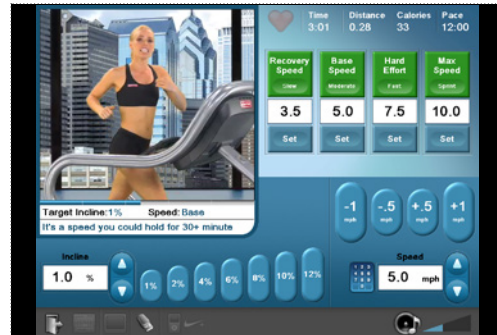
## STAR TRAC COACH™

The Star Trac Coach™ is a personalized treadmill workout led by a professional coach. Whether you're a competitive runner or a daily walker, it helps you maximize your treadmill workout.

Over 1 million possible workouts ensure a different workout every time. With the push of a few simple buttons, runners and walkers can create a treadmill workout with varying intensity, terrain and endurance levels sure to provide an efficient, effective and encouraging workout. To further enhance the user experience, the Star Trac Coach allows users to select their own background music from their iPod®, a USB stick or the built-in sound track. This revolutionary technology is exclusively available on Star Trac's E Series embedded screen treadmills. The Star Trac Coach takes the ordinary treadmill experience to a new level of engagement never seen before.

# EMBEDDED TOUCH SCREEN

From the intuitive interface of its revolutionary embedded touch screen, to the most entertainment options we've ever offered. The E Series truly exemplifies relevance, elegance and simplicity. For those ready to move beyond individual features and specs, and truly experience a treadmill on an entirely different level, your time has come.



**STAR TRAC COACH™** Over 1 million possible workouts ensure a different workout every time taking the ordinary treadmill experience to a new level of engagement never seen before.



**iPod® CONNECTIVITY** Integrated with music, video, a USB device-charging station and on-screen iPod® controls; users can display personal content while charging their iPod®.



**TV VIEW** Our 15" embedded HD personal viewing screen with intuitively placed dedicated channel and volume controls provide a personal viewing experience.



**DYNAMIC WORKOUT VIEWS** With Progress View, Heart Rate View, Track View and Simple View, information is always intuitive and relevant to the user.

# ENTERTAINMENT



## E SERIES PVS KIT

Integrated 15" HD personal viewing screen with dedicated intuitively placed channel and volume controls provides a personalized viewing experience for the E Series cardio products.

## S SERIES PVS KIT

Integrated 15" HD personal viewing screen with dedicated intuitively placed channel and volume controls provides a personalized viewing experience for the S Series cardio products.

**EXCLUSIVELY ON E SERIES PRODUCTS.**



Netpulse's on-demand platform delivers a unique media experience for exercisers and a powerful business tool for facility operators.

### Features:

- On Demand Entertainment
- Personal Playlists
- Workout Tracking
- Easy Interface



### WIRELESS AUDIO RECEIVER

Integrated 800/900mHz wireless receivers have Worldwide System Compatibility and provide audio from any ceiling or wall mounted TV. (Optional, requires wireless audio transmitter.)



### MADE FOR IPOD® KIT

Integrated with music, video, a USB device-charging station and on-screen iPod® controls; users can display personal content while charging their iPod®. (Optional. Included with PVS Kit and Wireless Audio Receiver Kit)



# E-TRx TREADMILLS

When designing the new E-TRx, we started with the most solid foundation you could have – more than 20 years of treadmill superiority. And while most would have been content in making subtle improvements to an already proven design, we set out to create the ultimate marriage of user experience, benefits, desires and features ever put under foot. The result is nothing short of impressive.

With conveniently close Hot Bar® controls, the industry’s most complete and flexible entertainment options and increased incline specs, the E-TRx has all the features and design elements users have longed for – perfectly woven into our sturdiest, sleekest, most user-friendly package ever. For those looking to move beyond individual features and specs and experience a truly different and infinitely better treadmill on every level, your time has come.

● standard    ○ optional

## TREADMILL FEATURES

	Star Trac Coach™	15" Embedded HD Touchscreen	15" Integrated HD PVS	Made for iPod® and Nike+ in the Gym	USB Charging Station	Integrated Wireless 800/900 MHz Receiver	Hot Bar® Controls	Personal Cooling Fan	Aluminum Frame	Waxless Belt & Deck System	5 HP AC Motor	3HP DC Motor	20% Max Incline	15% Max Incline	Intel® Inside™
E-TRxe	●	●		●	●		●	●	●	●	●		●		●
E-TRxi			●	●	●		●	●	●	●	●		●		
E-TRx			○		○	○	●	●	●	●	●		●		
S-TRc			○					●		●	●			●	
S-TRx			○					●				●		●	



## E-TRxe TREADMILL

### Model E-TRxe

- **Overall Weight** - 477 lbs (216.4 kg)
- **Running Surface** - 60" x 21.5" (152 x 55 cm)
- **Width** - 36" (91 cm)
- **Length** - 85" (215cm)
- **Height** - 63" (160 cm)
- 15" embedded HD touch screen aligns users work out with their entry goals and expectations with sophisticated and intuitive programs and features
- Integrated iPod® connectivity with music, video and USB charging station allows users to display personal content while charging media devices
- Easily accessible Hot Bar® is located closer to the user with one-finger speed and elevation controls, integrated stop button and contact heart rate grips
- Star Trac Coach™ Over 1 million possible workouts ensure a different workout every time taking the ordinary treadmill experience to a new level of engagement never seen before
- Centered dual-adjustable personal fans create a more rewarding workout
- Soft Trac® triple cell cushioning system provides maximum shock absorption
- 20% Max Incline and 21.5" Wide Belt
- User Weight Capacity of 500 lbs (227 kg)



## E-TRxi TREADMILL

### Model E-TRxi

- **Overall Weight** - 490 lbs (222.3 kg)
- **Running Surface** - 60" x 21.5" (152 x 55 cm)
- **Width** - 36" (91 cm)
- **Length** - 85" (215cm)
- **Height** - 78.5" (199 cm)
- 15" integrated HD personal viewing screen with dedicated intuitively-placed channel and volume controls provides a personalized viewing experience
- Integrated iPod® connectivity with music, video and USB charging station allows users to display personal content while charging media devices
- Easily accessible Hot Bar® is located closer to the user with one-finger speed and elevation controls, integrated stop button and contact heart rate grips
- Soft Trac® triple cell cushioning system provides maximum shock absorption
- Centered dual-adjustable personal fans create a more rewarding workout
- 20% Max Incline
- 21.5" Wide Belt
- User Weight Capacity of 500 lbs (227 kg)



## E-TRx TREADMILL

### Model E-TRx

- **Overall Weight** - 471 lbs (213.6 kg)
- **Running Surface** - 60" x 21.5" (152 x 55 cm)
- **Width** - 36" (91 cm)
- **Length** - 85" (215cm)
- **Height** - 63" (160 cm)
- Pre-wired for E Series PVS entertainment system
- Easily accessible Hot Bar® is located closer to the user with one-finger speed and elevation controls, integrated stop button and contact heart rate grips
- Soft Trac® triple cell cushioning system provides maximum shock absorption
- Centered dual-adjustable personal fans create a more rewarding workout
- 20% Max Incline
- 21.5" Wide Belt
- User Weight Capacity of 500 lbs (227 kg)




# CROSS TRAINERS

We like to think of it as one machine that actually does everything well. Elliptical training has become second only to treadmill training in facilities across the globe and it has become one of the most important cardio categories in the eyes of many clients. Finding the right motion, creating user centric safety features and offering the industry's best entertainment solutions was paramount in our Cross Trainer design.

The breakthrough begins with an ingenious rear approach open-step design that gives you the safest possible entry and exit on and off the product. The pedal placement design offers a best in class Q factor for enhanced biomechanics and our Soft Trac<sup>®</sup> pedal insures maximum comfort throughout the training session. The result is a better, more effective and more efficient workout.

● standard ○ optional

## CROSS TRAINER FEATURES

	15" Embedded HD Touchscreen	15" Integrated HD PVS	Made for iPod <sup>®</sup> and Nike+ in the Gym	USB Charging Station	Integrated Wireless 800/900 MHz Receiver	Personal Cooling Fan	SoftTrac <sup>®</sup> Pedals
E-CTe	●		●	●		●	●
E-CTi		●	●	●		●	●
E-CT		○		○	○	●	●
S-CTx		○				●	●





## E-CTe CROSS TRAINER

Model E-CTe

- **Step-Up Height** - 7" (17.8 cm)
- **Overall Weight** - 456 lbs (206.8 kg)
- **Width** - 30" (76.2 cm)
- **Length** - 76" (196 cm)
- **Height** - 71.5" (181.6 cm)
- 15" embedded HD touch screen aligns each users workout with their entry goals and intuitive programs
- Integrated iPod® connectivity with music, video and USB charging station allows users to display personal content while charging media devices
- Soft Trac® pedals provide ultimate shock-absorbing comfort throughout the entire workout
- Efficient footprint and approachable, stable platform with minimal step-up height for easy access from all angles
- Star Trac's popular adjustable personal fans create a more rewarding workout
- User Weight Capacity of 350 lbs (159 kg)



## E-CTi CROSS TRAINER

Model E-CTi

- **Step-Up Height** - 7" (17.8 cm)
- **Overall Weight** - 469 lbs (212.7 kg)
- **Width** - 30" (76.2 cm)
- **Length** - 76" (196 cm)
- **Height** - 88.5" (224.8 cm)
- 15" integrated HD personal viewing screen with dedicated intuitively-placed channel and volume controls provides a personalized viewing experience
- Integrated iPod® connectivity with music, video and USB charging station allows users to display personal content while charging media devices
- Soft Trac® pedals provide ultimate shock-absorbing comfort throughout the entire workout
- User-friendly console features a large message window, motivational track, 8 user-specific workout programs, personal fan, and multiple cup and accessory holders
- Star Trac's popular adjustable personal fans create a more rewarding workout
- User Weight Capacity of 350 lbs (159 kg)



## E-CT CROSS TRAINER

Model E-CT

- **Step-Up Height** - 7" (17.8 cm)
- **Overall Weight** - 447 lbs (202.7 kg)
- **Width** - 30" (76.2 cm)
- **Length** - 76" (196 cm)
- **Height** - 71.5" (181.6 cm)
- Pre-wired for E Series PVS entertainment system
- User-friendly console features a large message window, motivational track, 8 user-specific workout programs, personal fan, and multiple cup and accessory holders
- Soft Trac® pedals provide ultimate shock-absorbing comfort throughout the entire workout
- Efficient footprint and approachable, stable platform with minimal step-up height for easy access from all angles
- Star Trac's popular adjustable personal fans create a more rewarding workout
- User Weight Capacity of 350 lbs (159 kg)




● standard   ○ optional

# UPRIGHT BIKES

A gym standard that looks, feels and rides like anything but one. Take a classic reliable standby category and give it a healthy dose of reliability, style and energy – that’s what you’ll find with each and every one of our upright bikes. From the ultra reliable patented pedal and bottom bracket assembly to the eye-catching modern design this upright delivers numerous intuitive, user-friendly and comfortable features. One word you’ll never hear used to describe our bikes is “ordinary.”

Settle into its wide, cushioned seat and press start on the most user-friendly display on the market. It doesn’t take long to realize that we’ve taken the upright bike farther than most thought possible.

UPRIGHT BIKE FEATURES											
	15" Embedded HD Touchscreen	15" Integrated HD PVS	Made for iPod® and Nike+ in the Gym	USB Charging Station	Integrated Wireless 900/800 MHz Receiver	Personal Cooling Fan	Dual-Platform Pedals	Comfort Race Position	Aluminum Frame	Cordless; 14 Watt/40 RPM Start-Up	Cordless; 14 Watt/25 RPM Start-Up
E-UBe	●		●	●		●	●	●	●		
E-UBi		●	●	●		●	●	●	●		
E-UB		○	○	○	○	●	●	●	●	●	
S-UBx		○				●	●	●			●



## E-UBe UPRIGHT BIKE

### Model E-UBe

- **Overall Weight** - 152 lbs (68.9 kg)
- **Width** - 25" (63.5 cm)
- **Length** - 51" (129.5 cm)
- **Height** - 58" (147.3 cm)
- 15" embedded HD touch screen aligns each users workout with their entry goals and intuitive programs
- Integrated iPod® connectivity with music, video and USB charging station allows users to display personal content while charging media devices
- Dual platform pedals with inline skate-style straps provide user with option for secure hold or strap-free platform workout
- Dynamic Heart Rate Control® adjusts intensity level based on the user's heart rate for interval training
- Easy-up seat adjust for simple seat position changes
- Star Trac's popular adjustable personal fans create a more rewarding workout
- 3 piece patent pending bottom bracket and pedal system
- Aluminum frame for maximum corrosion protection
- User Weight Capacity of 350 lbs (159 kg)



## E-UBi UPRIGHT BIKE

### Model E-UBi

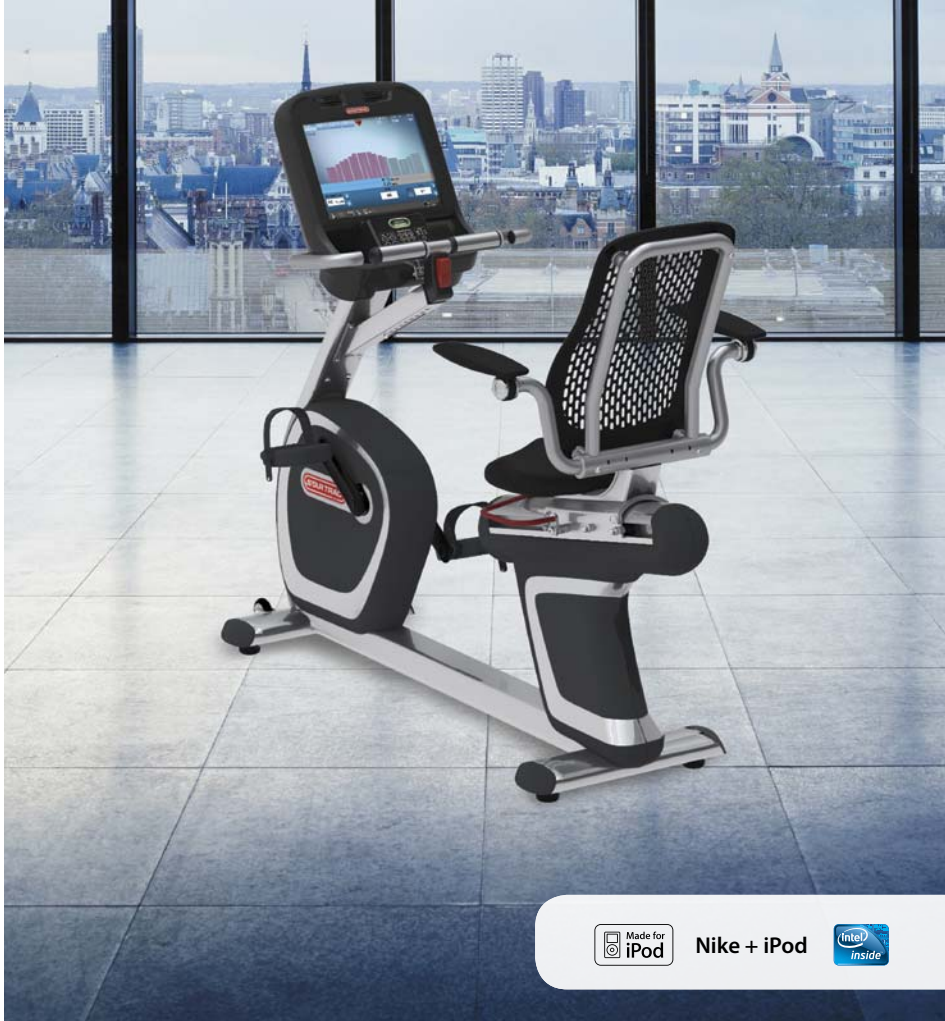
- **Overall Weight** - 163 lbs (73.9 kg)
- **Width** - 25" (63.5 cm)
- **Length** - 51" (129.5 cm)
- **Height** - 72" (182.9 cm)
- 15" integrated HD personal viewing screen with dedicated intuitively-placed channel and volume controls provides a personalized viewing experience
- Integrated iPod® connectivity with music, video and USB charging station allows users to display personal content while charging media devices
- Dual platform pedals with inline skate-style straps provide user with option for secure hold or strap-free platform workout
- Dynamic Heart Rate Control® adjusts intensity level based on the user's heart rate for interval training
- Easy-up seat adjust for simple seat position changes
- Star Trac's popular adjustable personal fans create a more rewarding workout
- 3 piece patent pending bottom bracket and pedal system
- Aluminum frame for maximum corrosion protection
- User Weight Capacity of 350 lbs (159 kg)



## E-UB UPRIGHT BIKE

### Model E-UB

- **Overall Weight** - 143 lbs (64.8 kg)
- **Width** - 25" (63.5 cm)
- **Length** - 51" (129.5 cm)
- **Height** - 58" (147.3 cm)
- Pre-wired for E Series PVS entertainment system
- Dual platform pedals with inline skate-style straps provide user with option for secure hold or strap-free platform workout
- Dynamic Heart Rate Control® adjusts intensity level based on the user's heart rate for interval training
- Easy-up seat adjust for simple seat position changes
- Star Trac's popular adjustable personal fans create a more rewarding workout
- 3 piece patent pending bottom bracket and pedal system
- Aluminum frame for maximum corrosion protection
- User Weight Capacity of 350 lbs (159 kg)



# RECUMBENT BIKES

Easy and comfortable. How do you improve on an already great stationary bike experience? You make it recumbent and as comfortable as a great chair. You start by making sure it features the same patented bottom bracket and pedal system that is unique to Star Trac cycles. Then we keep going with a modern iconic design offering the industry's most comfortable back rest, a walk-through frame design, heart rate bar and adjustable reading station, dual-platform pedals and Star Trac's signature personal fans. The result? A recumbent bike that's the coolest looking and feeling ride on the floor.

● standard   ○ optional

## RECUMBENT BIKE FEATURES

	15" Embedded HD Touchscreen	15" Integrated HD PVS	Made for iPod® and Nike+ in the Gym	USB Charging Station	Integrated Wireless 800/900 MHz Receiver	Personal Cooling Fan	Dual-Platform Pedals	Reading Station with Armrests	Aluminum Frame	Cordless; 14 Watt/40 RPM Start-Up	Cordless; 14 Watt/25 RPM Start-Up
E-RBe	●		●	●		●	●	●	●		
E-RBi		●	●	●		●	●	●	●		
E-RB		○	○	○	○	●	●	●	●	●	
S-RBx		○				●	●	●			●



## E-RBe RECUMBENT BIKE

Model E-RBe

- **Overall Weight** - 222 lbs (100.7 kg)
- **Width** - 28" (71.12 cm)
- **Length** - 66" (167 cm)
- **Height** - 52" (132.1 cm)
- 15" embedded HD touch screen aligns each users workout with their entry goals and intuitive programs
- Integrated iPod® connectivity with music, video and USB charging station allows users to display personal content while charging media devices
- Dual platform pedals with inline skate-style straps provide user with option for secure hold or strap-free platform workout
- Walk-through design and intuitive wrap-around seat adjust allow users to access and change seat position with ease
- Contoured backrest for increased airflow and comfort
- Improved shroud design to ease service
- Armrests alleviate tension in the shoulders and allow for a more relaxed posture
- 3 piece patent pending bottom bracket and pedal system
- User weight capacity of 350 lbs (159 kg)



## E-RBi RECUMBENT BIKE

Model E-RBi

- **Overall Weight** - 232 lbs (105.2 kg)
- **Width** - 28" (71.12 cm)
- **Length** - 66" (167 cm)
- **Height** - 67.5" (171.45 cm)
- 15" integrated HD personal viewing screen with dedicated intuitively-placed channel and volume controls provides a personalized viewing experience
- Integrated iPod® connectivity with music, video and USB charging station allows users to display personal content while charging media devices
- Dual platform pedals with inline skate-style straps provide user with option for secure hold or strap-free platform workout
- Walk-through design and intuitive wrap-around seat adjust allow users to access and change seat position with ease
- Contoured backrest for increased airflow and comfort
- Improved shroud design to ease service
- Armrests alleviate tension in the shoulders and allow for a more relaxed posture
- 3 piece patent pending bottom bracket and pedal system
- User weight capacity of 350 lbs (159 kg)



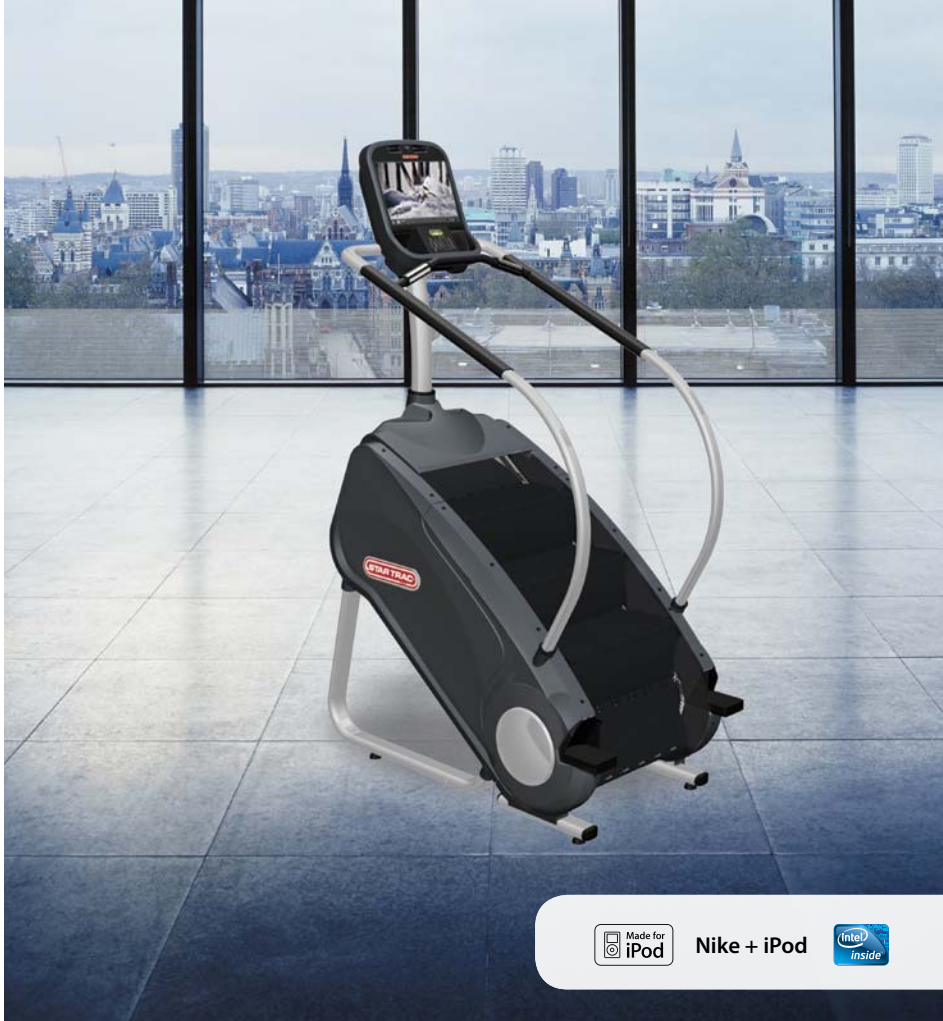
## E-RB RECUMBENT BIKE

Model E-RB

- **Overall Weight** - 213 lbs (96.6 kg)
- **Width** - 28" (71.12 cm)
- **Length** - 66" (167 cm)
- **Height** - 52" (132.1 cm)
- Pre-wired for E Series PVS entertainment system
- Dual platform pedals with inline skate-style straps provide user with option for secure hold or strap-free platform workout
- Walk-through design and intuitive wrap-around seat adjust allow users to access and change seat position with ease
- Contoured backrest for increased airflow and comfort
- Improved shroud design to ease service
- Armrests alleviate tension in the shoulders and allow for a more relaxed posture
- 3 piece patent pending bottom bracket and pedal system
- User weight capacity of 350 lbs (159 kg)

# STAIRMILLS

Imagine a never-ending staircase that goes as far as you can imagine or endure for the ultimate cardio workout experience. Take an iconic industry product that has been a mainstay in facilities for decades and give it the intuitive and entertainment packed display that Star Trac has become famous for and you have the Star Trac StairMill, a new player in a category that's been a facility favorite for many years. Step on for a "quick start" or interval program and then work towards conquering some of the greatest landmarks in the world with our Famous Steps® program. The ascent up the Great Pyramid, the Space Needle and the Eiffel Tower are only a step away.



● standard    ○ optional

## STAIRMILL FEATURES

	15" Embedded HD Touchscreen	15" Integrated HD PVS	Made for iPod® and Nike+ in the Gym	USB Charging Station	Integrated Wireless 800/900 MHz Receiver	Personal Cooling Fan	8" step height with a 9" foot platform	Famous Steps® Program	20 Levels of Intensity	Cordless; 14 Watt/25RPM Start-up
E-SMe	●		●	●		●	●	●	●	
E-SMi		●	●	●		●	●	●	●	
E-SM		○	○	○	○	●	●	●	●	●



## E-SMe STAIRMILL

Model E-SMe

- **Overall Weight** - 364 lbs (165.1 kg)
- **Width** - 29" (74 cm)
- **Length** - 50" (127 cm)
- **Height** - 78" (198 cm)
- 15" embedded HD touch screen aligns each users workout with their entry goals and intuitive programs
- Integrated iPod® connectivity with music, video and USB charging station allows users to display personal content while charging media devices
- Multiple motivational and muscle-specific workout programs allow users to energize their workout, whether it's climbing the Empire State Building, with Famous Steps® or toning with the Glute Sculptor program
- Supportive handrails to allow comfortable hand placement at every angle
- Star Trac's popular adjustable personal fans create a more rewarding workout
- 8" step height with a 9" foot platform for a realistic stair climbing experience
- User weight capacity of 300 lbs (136 kg)



## E-SMi STAIRMILL

Model E-SMi

- **Overall Weight** - 376 lbs (170.5 kg)
- **Width** - 29" (74 cm)
- **Length** - 50" (127 cm)
- **Height** - 93" (236.22 cm)
- 15" integrated HD personal viewing screen with dedicated intuitively-placed channel and volume controls provides a personalized viewing experience
- Integrated iPod® connectivity with music, video and USB charging station allows users to display personal content while charging media devices
- Multiple motivational and muscle-specific workout programs allow users to energize their workout, whether it's climbing the Empire State Building, with Famous Steps® or toning with the Glute Sculptor program
- Supportive handrails to allow comfortable hand placement at every angle
- Star Trac's popular adjustable personal fans create a more rewarding workout
- 8" step height with a 9" foot platform for a realistic stair climbing experience
- User weight capacity of 300 lbs (136 kg)



## E-SM STAIRMILL

Model E-SM

- **Overall Weight** - 355 lbs (161 kg)
- **Width** - 29" (74 cm)
- **Length** - 50" (127 cm)
- **Height** - 78" (198 cm)
- Pre-wired for E Series PVS entertainment system
- Multiple motivational and muscle-specific workout programs allow users to energize their workout, whether it's climbing the Empire State Building, with Famous Steps® or toning with the Glute Sculptor program
- Supportive handrails to allow comfortable hand placement at every angle
- Star Trac's popular adjustable personal fans create a more rewarding workout
- 8" step height with a 9" foot platform for a realistic stair climbing experience
- User weight capacity of 300 lbs (136 kg)




# STEPPERS

A true step up and ahead of the rest, our steppers have been a study in refinement and innovation for years. By analyzing the hand and body positions of users, we continually fine tune performance across a broader range of body types and incorporate features previously unavailable on other machines.

Glute Sculptor and Thigh Toner programs deliver muscle-specific workouts that answer the requests for more focused, motivational challenges. And our exclusive Famous Steps® program invites you to scale world famous landmarks, including the Eiffel Tower, the Great Pyramid and the Empire State Building. Add in our intuitive displays and sleek look, and it's easy to see why we're continuing to make steps in the right direction.

● standard    ○ optional

STEPPER FEATURES											
	15" Embedded HD Touchscreen	15" Integrated HD PVS	Made for iPod® and Nike+ in the Gym	USB Charging Station	Integrated Wireless 800/900 MHz Receiver	Personal Cooling Fan	SoftTrac® Pedals	Aero Bar Handrail System	Famous Steps® Program	20 Levels of Intensity	Cordless; 14 Watt/25RPM Start-up
E-STe	●		●	●		●	●	●	●	●	
E-STi		●	●	●		●	●	●	●	●	
E-ST		○	○	○	○	●	●	●	●	●	●





**E-STe STEPPER**  
Model E-STe

- **Overall Weight** - 271 lbs (122.9 kg)
- **Width** - 27" (69 cm)
- **Length** - 43" (110 cm)
- **Height** - 70.25" (178.4 cm)
- 15" embedded HD touch screen aligns each users workout with their entry goals and intuitive programs
- Integrated iPod® connectivity with music, video and USB charging station allows users to display personal content while charging media devices
- Soft Trac® pedals provide ultimate shock-absorbing comfort throughout the entire workout
- Multiple motivational and muscle-specific workout programs allow users to energize their workout, whether it's climbing the Empire State Building, with Famous Steps® or toning with the Glute Sculptor program
- Supportive handrails including an Aero Bar that runs over the display allow comfortable hand placement at every angle
- Star Trac's popular adjustable personal fans create a more rewarding workout
- User weight capacity of 350 lbs (159 kg)



**E-STi STEPPER**  
Model E-STi

- **Overall Weight** - 283 lbs (128.4 kg)
- **Width** - 27" (69 cm)
- **Length** - 43" (110 cm)
- **Height** - 87.25" (221.6 cm)
- 15" integrated HD personal viewing screen with dedicated intuitively placed channel and volume controls provides a personalized viewing experience
- Integrated iPod® connectivity with music, video and USB charging station allows users to display personal content while charging media devices
- Soft Trac® pedals provide ultimate shock-absorbing comfort throughout the entire workout
- Multiple motivational and muscle-specific workout programs allow users to energize their workout, whether it's climbing the Empire State Building, with Famous Steps® or toning with the Glute Sculptor program
- Supportive handrails including an Aero Bar that runs over the display allow comfortable hand placement at every angle
- Star Trac's popular adjustable personal fans create a more rewarding workout
- User weight capacity of 350 lbs (159 kg)



**E-ST STEPPER**  
Model E-ST

- **Overall Weight** - 262 lbs (118.8 kg)
- **Width** - 27" (69 cm)
- **Length** - 43" (110 cm)
- **Height** - 70.25" (178.4 cm)
- Pre-wired for E Series PVS entertainment system
- Soft Trac® pedals provide ultimate shock-absorbing comfort throughout the entire workout
- Multiple motivational and muscle-specific workout programs allow users to energize their workout, whether it's climbing the Empire State Building, with Famous Steps® or toning with the Glute Sculptor program
- Supportive handrails including an Aero Bar that runs over the display allow comfortable hand placement at every angle
- Star Trac's popular adjustable personal fans create a more rewarding workout
- User weight capacity of 350 lbs (159 kg)

# eSpinner®

The eSpinner® is more than just a step into the future, it's the Spinning® program on your members' terms.

This breakthrough Spinning bike manufactured by Star Trac, extends the Spinning experience out of the group cycling room and onto the cardio floor. Users of all levels and abilities can experience the fun, energy and excitement of a Spinning class whenever they want, and on their terms.

In 1989, Spinning changed the face of group exercise and the eSpinner continues that legacy – not only in cardio, but also in the very way people work out. A Virtual Master Instructor guides the rider with a state-of-the-art embedded touch screen, to its real, on-the-bike feel. No other indoor cycling product on the market offers the level of interaction and user experience that the eSpinner does. Welcome to the future.



Coaching



Create your own workout.



TV tuner/iPod®

# eSpinner®



Model 7200

- Patent pending “coaching” video system with over 1 million ride variation led by a Master Spinning® Instructor
- Create your own program with customized Spinning® based protocols
- Full rider data dashboard featuring cadence, heart rate, riding position, hand position, time, distance and calories
- Cable and satellite ready for entertainment
- Made for iPod® docking station with touch screen navigation of entertainment. USB docking station for media, music and charging of USB based devices
- Handlebars and seat settings provide vertical and fore/aft user adjustment for optimal bike fit
- Dual oversized easy access water bottle holders integrated into display design
- Patent pending taper fit bottom bracket and pedal system for increased strength and reliability
- Superior biomechanics with best-in-class bottom bracket Q factor
- Smart Release™ flywheel safety system ideal for new riders and unsupervised areas
- Powerful chain drive system delivers an authentic riding feel
- Custom dual-sided SPD® pedals featuring a larger pedal body and both SPD and toe cage design
- Non-rusting urethane/over-molded leveling feet, for easy leveling adjustment
- High impact urethane rear stretch guard and step guards to prevent damage to frame from cleated cycling shoes
- Accommodates riders 4’ 10” (147.3 cm) to 6’ 10” (208.3cm) with a maximum recommended weight capacity of 350 lbs (158.8 kg)

Overall Weight	Flywheel weight	Width	Length	Height
161 lbs (73 kg)	40 lbs (18.2 kg)	21" (53.3 cm)	54" (137 cm)	40" (102 cm)

**WORLD HEADQUARTERS** [www.startrac.com](http://www.startrac.com)  
4400 NE 77th Avenue, Suite 300 Vancouver, WA 98662  
Tel +1 (714) 669 1660 Corp +1 (800) 228 6635 Fax +1 (714) 838 6286

**EUROPE HEADQUARTERS** [www.startrac.com/europe](http://www.startrac.com/europe)  
Unit 4, The Gateway Centre, Coronation Road  
Cressex Business Park, High Wycombe, Bucks HP12 3SU United Kingdom  
Tel +44 (0) 1494 688260 Fax +44 (0) 1494 688269

**ASIA HEADQUARTERS**  
No. 39A Jalan Pemimpin, Halcyon Building #01-02, Singapore 577183  
Tel +65 6255 6252 Fax +65 6255 1501

**MAD DOGG ATHLETICS, INC.** [www.spinning.com](http://www.spinning.com)  
2111 Narcissus Court, Venice, California 90291 USA  
Tel +1 (310) 823 7008 Corp +1 (800) 847 7746 Fax +1 (310) 823 7408

**MAD DOGG ATHLETICS EUROPE** [www.spinningeurope.com](http://www.spinningeurope.com)  
Scheldeweg 3, Maassluis 3144 ES, The Netherlands  
Tel +31 (0) 10 590 45 08 Fax +31 (0) 10 590 00 54



©2012 StarTrac All right reserved. StarTrac, the StarTrac logo, Famous Steps, SoftTrac and Dynamic Heart Rate Control are registered trademarks of Core Industries. Hot Bar and StarTrac Coach are trademarks of Core Industries. SPIN®, Spinning®, Spinner®, the Spinning® logo and eSpinner® are registered trademarks of Mad Dogg Athletics, Inc. Polar is a registered trademark of Polar Electro, Inc. . iPod is a registered trademark of Apple, Inc. Intel Inside™ is a trademark of Intel. SPD is a registered trademark of Shimano, Inc. Smart Release is registered trademark of Nautilus, Inc.

